

Product datasheet for **TA806578**

PD L2 (PDCD1LG2) Mouse Monoclonal Antibody [Clone ID: OTI11F9]

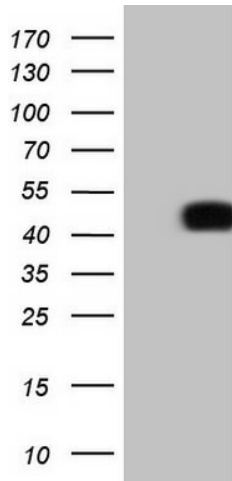
Product data:

Product Type:	Primary Antibodies
Clone Name:	OTI11F9
Applications:	FC, WB
Recommended Dilution:	WB 1:2000
Reactivity:	Human
Host:	Mouse
Isotype:	IgG1
Clonality:	Monoclonal
Immunogen:	Full length human recombinant protein of human PDCD1LG2 (NP_079515) produced in HEK293T cell.
Formulation:	PBS (pH 7.3) containing 1% BSA, 50% glycerol and 0.02% sodium azide.
Concentration:	1 mg/ml
Purification:	Purified from mouse ascites fluids or tissue culture supernatant by affinity chromatography (protein A/G)
Conjugation:	Unconjugated
Storage:	Store at -20°C as received.
Stability:	Stable for 12 months from date of receipt.
Predicted Protein Size:	30.8 kDa
Gene Name:	programmed cell death 1 ligand 2
Database Link:	NP_079515 Entrez Gene 80380 Human Q9BQ51
Synonyms:	B7DC; bA574F11.2; Btdc; CD273; PD-L2; PDCD1L2; PDL2
Protein Families:	Transmembrane
Protein Pathways:	Cell adhesion molecules (CAMs)

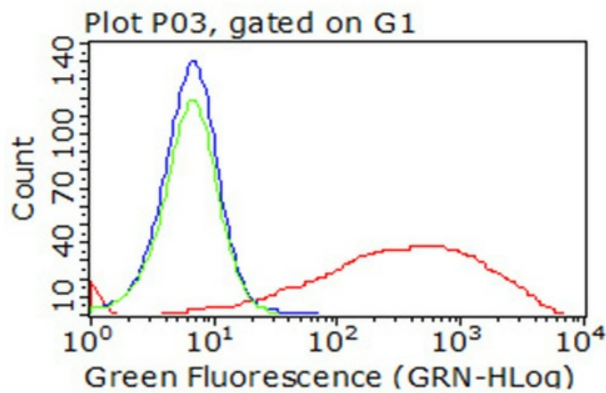


[View online »](#)

Product images:



HEK293T cells were transfected with the pCMV6-ENTRY control (Left lane) or pCMV6-ENTRY PDCD1LG2 ([RC224141], Right lane) cDNA for 48 hrs and lysed. Equivalent amounts of cell lysates (5 ug per lane) were separated by SDS-PAGE and immunoblotted with anti-PDCD1LG2. Positive lysates [LY410802] (100ug) and [LC410802] (20ug) can be purchased separately from OriGene.



Flow cytometric analysis of living 293T cells transfected with PDL2 overexpression plasmid ([RC224141], Red)/empty vector ([PS100001], Blue) using anti-PDL2 antibody (TA806578). Cells incubated with a non-specific antibody (Green) were used as isotype control (1:100).