

## Product datasheet for **TA806559**

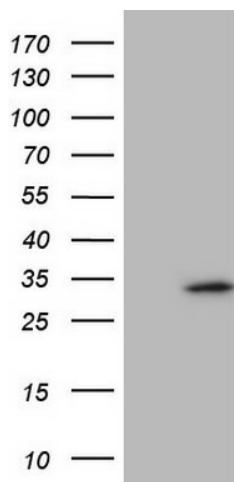
### SPC25 Mouse Monoclonal Antibody [Clone ID: OTI3D11]

#### Product data:

Product Type:	Primary Antibodies
Clone Name:	OTI3D11
Applications:	WB
Recommended Dilution:	WB 1:500
Reactivity:	Human
Host:	Mouse
Isotype:	IgG1
Clonality:	Monoclonal
Immunogen:	Full length human recombinant protein of human SPC25 (NP_065726) produced in E.coli.
Formulation:	PBS (pH 7.3) containing 1% BSA, 50% glycerol and 0.02% sodium azide.
Concentration:	1 mg/ml
Purification:	Purified from mouse ascites fluids or tissue culture supernatant by affinity chromatography (protein A/G)
Conjugation:	Unconjugated
Storage:	Store at -20°C as received.
Stability:	Stable for 12 months from date of receipt.
Predicted Protein Size:	26 kDa
Gene Name:	SPC25, NDC80 kinetochore complex component
Database Link:	<a href="#">NP_065726</a> <a href="#">Entrez Gene 57405 Human</a> <a href="#">Q9HBM1</a>
Background:	This gene encodes a protein that may be involved in kinetochore-microtubule interaction and spindle checkpoint activity. [provided by RefSeq, Jul 2008]
Synonyms:	AD024; hSpc25; SPBC25
Protein Families:	Druggable Genome



[View online »](#)

**Product images:**

HEK293T cells were transfected with the pCMV6-ENTRY control (Cat# [PS100001], Left lane) or pCMV6-ENTRY SPC25 (Cat# [RC204623], Right lane) cDNA for 48 hrs and lysed. Equivalent amounts of cell lysates (5 ug per lane) were separated by SDS-PAGE and immunoblotted with anti-SPC25(Cat# TA806559). Positive lysates [LY412309] (100ug) and [LC412309] (20ug) can be purchased separately from OriGene.