

Product datasheet for **TA806542S**

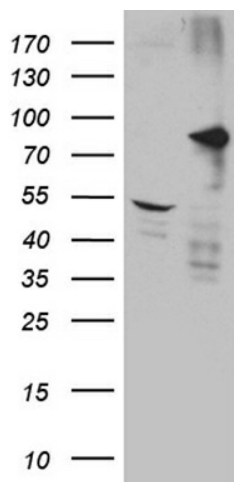
DCAMKL1 (DCLK1) Mouse Monoclonal Antibody [Clone ID: OTI1F8]

Product data:

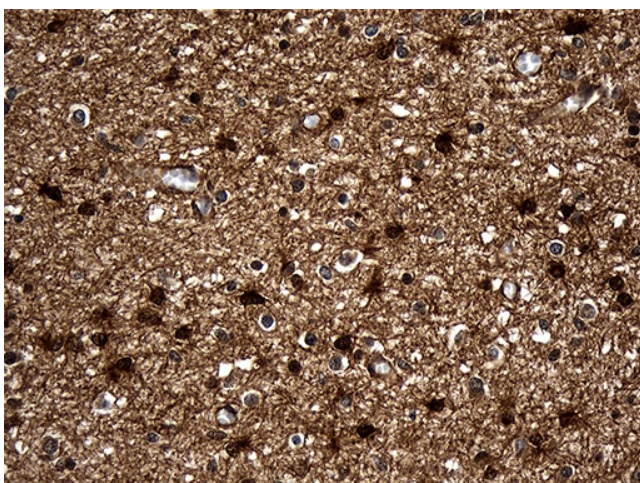
| | |
|-------------------------|---|
| Product Type: | Primary Antibodies |
| Clone Name: | OTI1F8 |
| Applications: | IHC, WB |
| Recommended Dilution: | WB 1:2000, IHC 1:500 |
| Reactivity: | Human, Mouse |
| Host: | Mouse |
| Isotype: | IgG2b |
| Clonality: | Monoclonal |
| Immunogen: | Human recombinant protein fragment corresponding to amino acids 193-492 of human DCLK1 (NP_004725) produced in E.coli. |
| Formulation: | PBS (pH 7.3) containing 1% BSA, 50% glycerol and 0.02% sodium azide. |
| Concentration: | 1 mg/ml |
| Purification: | Purified from mouse ascites fluids or tissue culture supernatant by affinity chromatography (protein A/G) |
| Conjugation: | Unconjugated |
| Storage: | Store at -20°C as received. |
| Stability: | Stable for 12 months from date of receipt. |
| Predicted Protein Size: | 80.9 kDa |
| Gene Name: | doublecortin like kinase 1 |
| Database Link: | NP_004725 Entrez Gene 13175 Mouse Entrez Gene 9201 Human O15075 |
| Synonyms: | CL1; CLICK1; DCAMKL1; DCDC3A; DCLK |
| Protein Families: | Druggable Genome, Protein Kinase |



[View online »](#)

Product images:

HEK293T cells were transfected with the pCMV6-ENTRY control (Cat# [PS100001], Left lane) or pCMV6-ENTRY DCLK1 (Cat# [RC217050], Right lane) cDNA for 48 hrs and lysed. Equivalent amounts of cell lysates (5 ug per lane) were separated by SDS-PAGE and immunoblotted with anti-DCLK1 (1:2000) (Cat# [TA806542]). Positive lysates [LY417785] (100ug) and [LC417785] (20ug) can be purchased separately from OriGene.



Immunohistochemical staining of paraffin-embedded Human embryonic cerebellum within the normal limits using anti-DCLK1 mouse monoclonal antibody. (Heat-induced epitope retrieval by 1mM EDTA in 10mM Tris buffer (pH8.5) at 120°C for 3min, [TA806542]) (1:500).