

## Product datasheet for **TA806523**

### Claudin 3 (CLDN3) Mouse Monoclonal Antibody [Clone ID: OTI2D4]

#### Product data:

Product Type:	Primary Antibodies
Clone Name:	OTI2D4
Applications:	WB
Recommended Dilution:	WB 1:2000
Reactivity:	Human, Mouse, Rat
Host:	Mouse
Isotype:	IgG2b
Clonality:	Monoclonal
Immunogen:	Full length human recombinant protein of human CLDN3 (NP_001297) produced in HEK293T cell.
Formulation:	PBS (pH 7.3) containing 1% BSA, 50% glycerol and 0.02% sodium azide.
Concentration:	1 mg/ml
Purification:	Purified from mouse ascites fluids or tissue culture supernatant by affinity chromatography (protein A/G)
Conjugation:	Unconjugated
Storage:	Store at -20°C as received.
Stability:	Stable for 12 months from date of receipt.
Gene Name:	claudin 3
Database Link:	<a href="#">NP_001297</a> <a href="#">Entrez Gene 12739 Mouse</a> <a href="#">Entrez Gene 65130 Rat</a> <a href="#">Entrez Gene 1365 Human</a> <a href="#">O15551</a>



[View online »](#)

**Background:**

Tight junctions represent one mode of cell-to-cell adhesion in epithelial or endothelial cell sheets, forming continuous seals around cells and serving as a physical barrier to prevent solutes and water from passing freely through the paracellular space. These junctions are comprised of sets of continuous networking strands in the outwardly facing cytoplasmic leaflet, with complementary grooves in the inwardly facing extracytoplasmic leaflet. The protein encoded by this intronless gene, a member of the claudin family, is an integral membrane protein and a component of tight junction strands. It is also a low-affinity receptor for Clostridium perfringens enterotoxin, and shares aa sequence similarity with a putative apoptosis-related protein found in rat. [provided by RefSeq, Jul 2008]

**Synonyms:**

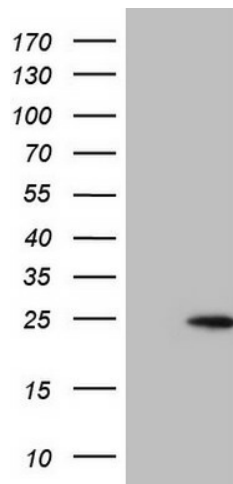
C7orf1; CPE-R2; CPETR2; HRVP1; RVP1

**Protein Families:**

Druggable Genome, Transmembrane

**Protein Pathways:**

Cell adhesion molecules (CAMs), Leukocyte transendothelial migration, Tight junction

**Product images:**

HEK293T cells were transfected with the pCMV6-ENTRY control (Left lane) or pCMV6-ENTRY CLDN3 ([RC204882], Right lane) cDNA for 48 hrs and lysed. Equivalent amounts of cell lysates (5 ug per lane) were separated by SDS-PAGE and immunoblotted with anti-CLDN3. Positive lysates [LY420014] (100ug) and [LC420014] (20ug) can be purchased separately from OriGene.