

Product datasheet for **TA806518BM**

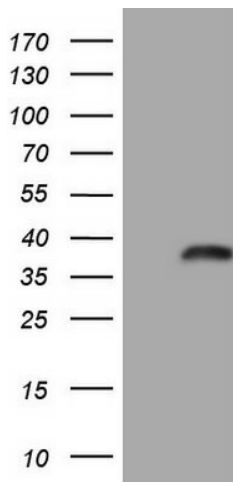
WIBG (PYM1) Mouse Monoclonal Antibody (HRP conjugated) [Clone ID: OTI2C7]

Product data:

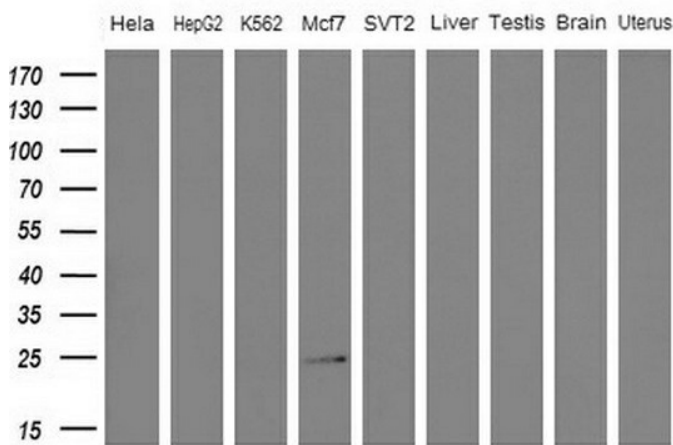
Product Type:	Primary Antibodies
Clone Name:	OTI2C7
Applications:	WB
Recommended Dilution:	WB 1:2000
Reactivity:	Human
Host:	Mouse
Isotype:	IgG1
Clonality:	Monoclonal
Immunogen:	Full length human recombinant protein of human WIBG (NP_115721) produced in HEK293T cell.
Formulation:	PBS (pH 7.3) containing 1% BSA, 50% glycerol.
Concentration:	0.5 mg/ml
Purification:	Purified from mouse ascites fluids or tissue culture supernatant by affinity chromatography (protein A/G)
Conjugation:	HRP
Storage:	Store at -20°C as received.
Stability:	Stable for 12 months from date of receipt.
Predicted Protein Size:	22.5 kDa
Gene Name:	PYM homolog 1, exon junction complex associated factor
Database Link:	NP_115721 Entrez Gene 84305 Human Q9BRP8
Synonyms:	PYM; WIBG



[View online »](#)

Product images:


HEK293T cells were transfected with the pCMV6-ENTRY control (Left lane) or pCMV6-ENTRY WIBG ([RC202988], Right lane) cDNA for 48 hrs and lysed. Equivalent amounts of cell lysates (5 ug per lane) were separated by SDS-PAGE and immunoblotted with anti-WIBG. Positive lysates [LY410182] (100ug) and [LC410182] (20ug) can be purchased separately from OriGene.



Western blot analysis of extracts (10ug) from 5 different cell lines and 4 human tissue by using anti-WIBG monoclonal antibody (1: HeLa; 2: HepG2; 3: K562; 4: Mcf7; 5: SVT2; 6: Liver; 7: Testis; 8: Brain; 9: Uterus) at 1:200 dilution.