

Product datasheet for **TA806484BM**

Retinoic Acid Receptor alpha (RARA) Mouse Monoclonal Antibody (HRP conjugated) [Clone ID: OTI2C3]

Product data:

Product Type:	Primary Antibodies
Clone Name:	OTI2C3
Applications:	IHC, WB
Recommended Dilution:	WB 1:2000, IHC 1:150
Reactivity:	Human, Mouse, Rat
Host:	Mouse
Isotype:	IgG1
Clonality:	Monoclonal
Immunogen:	Human recombinant protein fragment corresponding to amino acids 52-299 of human RARA(NP_000955) produced in E.coli.
Formulation:	PBS (pH 7.3) containing 1% BSA, 50% glycerol.
Concentration:	0.5 mg/ml
Purification:	Purified from mouse ascites fluids or tissue culture supernatant by affinity chromatography (protein A/G)
Conjugation:	HRP
Storage:	Store at -20°C as received.
Stability:	Stable for 12 months from date of receipt.
Predicted Protein Size:	50.6 kDa
Gene Name:	retinoic acid receptor alpha
Database Link:	NP_000955 Entrez Gene 19401 Mouse Entrez Gene 24705 Rat Entrez Gene 5914 Human P10276



[View online »](#)

Background:

This gene represents a nuclear retinoic acid receptor. The encoded protein, retinoic acid receptor alpha, regulates transcription in a ligand-dependent manner. This gene has been implicated in regulation of development, differentiation, apoptosis, granulopoiesis, and transcription of clock genes. Translocations between this locus and several other loci have been associated with acute promyelocytic leukemia. Alternatively spliced transcript variants have been found for this locus. [provided by RefSeq, Sep 2010]

Synonyms:

NR1B1; RAR

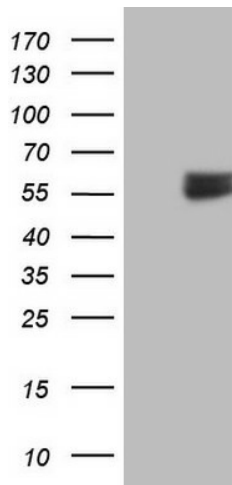
Protein Families:

Druggable Genome, Nuclear Hormone Receptor, Transcription Factors

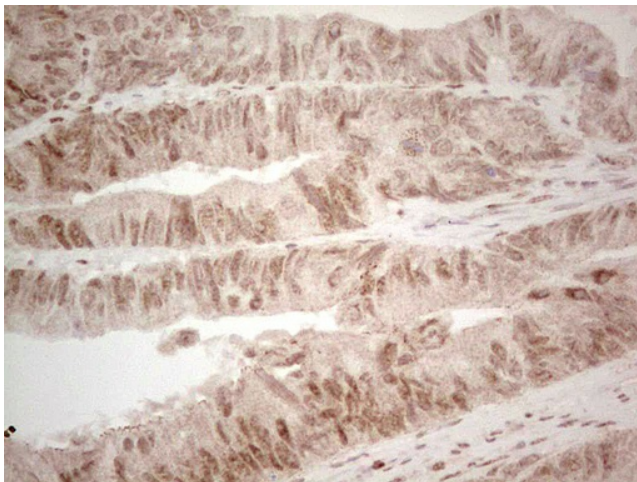
Protein Pathways:

Acute myeloid leukemia, Pathways in cancer

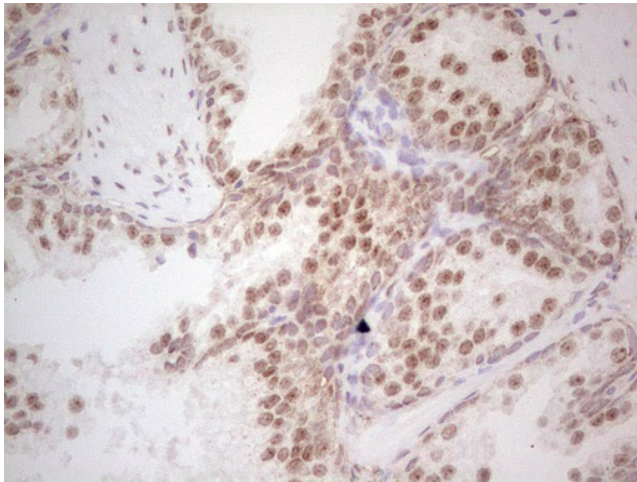
Product images:



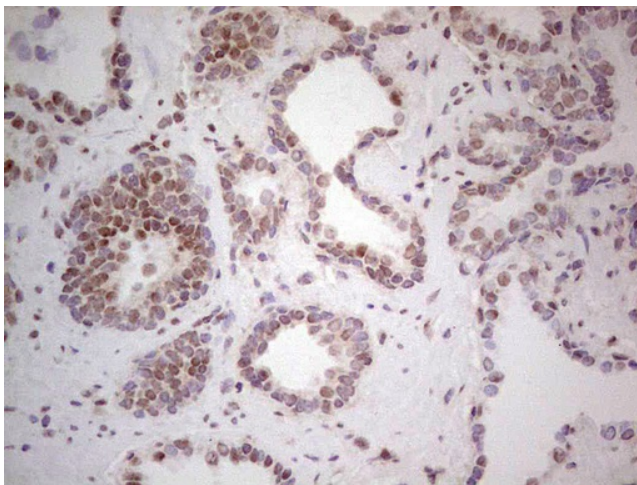
HEK293T cells were transfected with the pCMV6-ENTRY control (Cat# [PS100001], Left lane) or pCMV6-ENTRY RARA (Cat# [RC200430], Right lane) cDNA for 48 hrs and lysed. Equivalent amounts of cell lysates (5 ug per lane) were separated by SDS-PAGE and immunoblotted with anti-RARA (Cat# [TA806484]). Positive lysates [LY400350] (100ug) and [LC400350] (20ug) can be purchased separately from OriGene.



Immunohistochemical staining of paraffin-embedded Adenocarcinoma of Human colon tissue using anti-RARA mouse monoclonal antibody. (Heat-induced epitope retrieval by 1mM EDTA in 10mM Tris, pH8.5, 120°C for 3min, [TA806484])



Immunohistochemical staining of paraffin-embedded Human prostate tissue within the normal limits using anti-RARA mouse monoclonal antibody. (Heat-induced epitope retrieval by 1mM EDTA in 10mM Tris, pH8.5, 120°C for 3min, [TA806484])



Immunohistochemical staining of paraffin-embedded Carcinoma of Human prostate tissue using anti-RARA mouse monoclonal antibody. (Heat-induced epitope retrieval by 1mM EDTA in 10mM Tris, pH8.5, 120°C for 3min, [TA806484])