

## Product datasheet for **TA806473M**

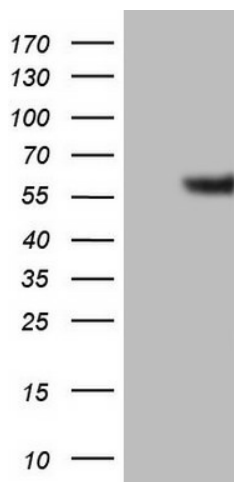
### **GABA A Receptor alpha 5 (GABRA5) Mouse Monoclonal Antibody [Clone ID: OTI1G9]**

#### **Product data:**

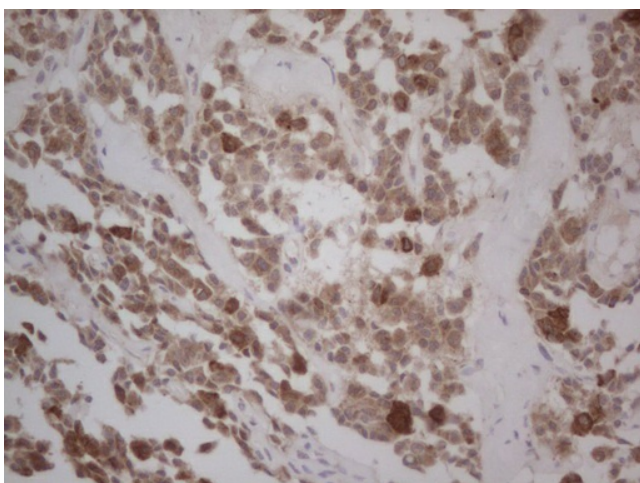
Product Type:	Primary Antibodies
Clone Name:	OTI1G9
Applications:	IHC, WB
Recommended Dilution:	WB 1:2000
Reactivity:	Human, Mouse, Rat
Host:	Mouse
Isotype:	IgG2b
Clonality:	Monoclonal
Immunogen:	Human recombinant protein fragment corresponding to amino acids 32-259 of human GABRA5(NP_000801) produced in E.coli.
Formulation:	PBS (pH 7.3) containing 1% BSA, 50% glycerol and 0.02% sodium azide.
Concentration:	1 mg/ml
Purification:	Purified from mouse ascites fluids or tissue culture supernatant by affinity chromatography (protein A/G)
Conjugation:	Unconjugated
Storage:	Store at -20°C as received.
Stability:	Stable for 12 months from date of receipt.
Gene Name:	gamma-aminobutyric acid type A receptor alpha5 subunit
Database Link:	<a href="#">NP_000801</a> <a href="#">Entrez Gene 29707 Rat</a> <a href="#">Entrez Gene 110886 Mouse</a> <a href="#">Entrez Gene 2558 Human</a> <a href="#">P31644</a>
Synonyms:	MGC138184
Protein Families:	Druggable Genome, Ion Channels: Cys-loop Receptors, Transmembrane
Protein Pathways:	Neuroactive ligand-receptor interaction


[View online »](#)

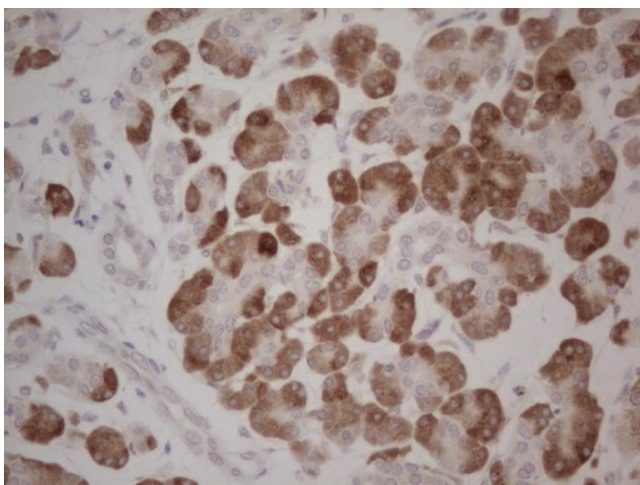
## Product images:



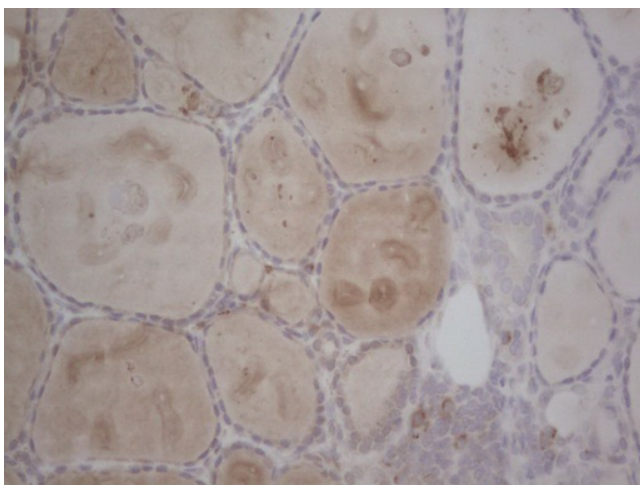
HEK293T cells were transfected with the pCMV6-ENTRY control (Cat# [PS100001], Left lane) or pCMV6-ENTRY GABRA5 (Cat# [RC216541], Right lane) cDNA for 48 hrs and lysed. Equivalent amounts of cell lysates (5 ug per lane) were separated by SDS-PAGE and immunoblotted with anti-GABRA5 (Cat# [TA806473]). Positive lysates [LY400284] (100ug) and [LC400284] (20ug) can be purchased separately from OriGene.



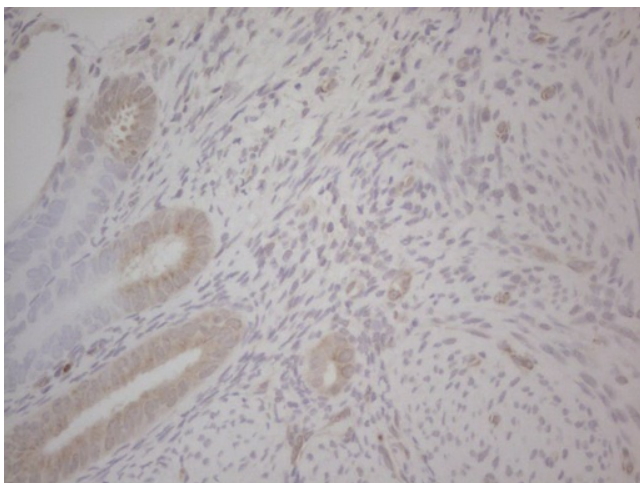
Immunohistochemical staining of paraffin-embedded Carcinoma of Human lung tissue using anti-GABRA5 mouse monoclonal antibody Dilution: 1:150. Heat-induced epitope retrieval by EDTA solution buffer pH 8.0 at 120°C for 3 min.



Immunohistochemical staining of paraffin-embedded Carcinoma of Human pancreas tissue using anti-GABRA5 mouse monoclonal antibody Dilution: 1:150. Heat-induced epitope retrieval by EDTA solution buffer pH 8.0 at 120°C for 3 min.



Immunohistochemical staining of paraffin-embedded Human thyroid tissue within the normal limits using anti-GABRA5 mouse monoclonal antibody Dilution: 1:150. Heat-induced epitope retrieval by EDTA solution buffer pH 8.0 at 120°C for 3 min.



Immunohistochemical staining of paraffin-embedded Human endometrium tissue within the normal limits using anti-GABRA5 mouse monoclonal antibody Dilution: 1:150. Heat-induced epitope retrieval by EDTA solution buffer pH 8.0 at 120°C for 3 min.