

Product datasheet for **TA806453AM**

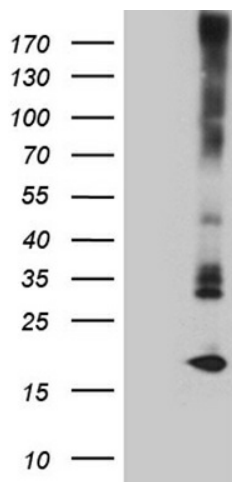
MGP Mouse Monoclonal Antibody (Biotin conjugated) [Clone ID: OTI11D9]

Product data:

| | |
|-------------------------|---|
| Product Type: | Primary Antibodies |
| Clone Name: | OTI11D9 |
| Applications: | WB |
| Recommended Dilution: | WB 1:2000 |
| Reactivity: | Human |
| Host: | Mouse |
| Isotype: | IgG1 |
| Clonality: | Monoclonal |
| Immunogen: | Full length human recombinant protein of human MGP (NP_000891) produced in E.coli. |
| Formulation: | PBS (pH 7.3) containing 1% BSA, 50% glycerol and 0.02% sodium azide. |
| Concentration: | 0.5 mg/ml |
| Purification: | Purified from mouse ascites fluids or tissue culture supernatant by affinity chromatography (protein A/G) |
| Conjugation: | Biotin |
| Storage: | Store at -20°C as received. |
| Stability: | Stable for 12 months from date of receipt. |
| Predicted Protein Size: | 12.2 kDa |
| Gene Name: | matrix Gla protein |
| Database Link: | NP_000891 Entrez Gene 4256 Human P08493 |
| Synonyms: | GIG36; MGLAP; NTI |
| Protein Families: | Secreted Protein |



[View online »](#)

Product images:

HEK293T cells were transfected with the pCMV6-ENTRY control (Left lane) or pCMV6-ENTRY MGP ([RC210666], Right lane) cDNA for 48 hrs and lysed. Equivalent amounts of cell lysates (5 ug per lane) were separated by SDS-PAGE and immunoblotted with anti-MGP (1:2000). Positive lysates [LY400323] (100ug) and [LC400323] (20ug) can be purchased separately from OriGene.