

## Product datasheet for **TA806448M**

### **RHOC Mouse Monoclonal Antibody [Clone ID: OTI3A5]**

#### **Product data:**

Product Type:	Primary Antibodies
Clone Name:	OTI3A5
Applications:	IHC, WB
Recommended Dilution:	WB 1:2000, IHC 1:150
Reactivity:	Human, Mouse, Rat
Host:	Mouse
Isotype:	IgG2b
Clonality:	Monoclonal
Immunogen:	Synthetic peptide corresponding to C terminal of human RHOC.
Formulation:	PBS (pH 7.3) containing 1% BSA, 50% glycerol and 0.02% sodium azide.
Concentration:	1 mg/ml
Purification:	Purified from mouse ascites fluids or tissue culture supernatant by affinity chromatography (protein A/G)
Conjugation:	Unconjugated
Storage:	Store at -20°C as received.
Stability:	Stable for 12 months from date of receipt.
Predicted Protein Size:	21.8 kDa
Gene Name:	ras homolog family member C
Database Link:	<a href="#">NP_786886</a> <a href="#">Entrez Gene 11853 Mouse</a> <a href="#">Entrez Gene 295342 Rat</a> <a href="#">Entrez Gene 389 Human</a> <a href="#">P08134</a>



[View online »](#)

**Background:**

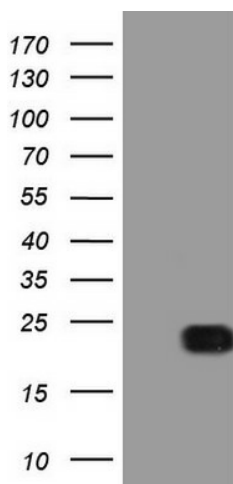
This gene encodes a member of the Rho family of small GTPases, which cycle between inactive GDP-bound and active GTP-bound states and function as molecular switches in signal transduction cascades. Rho proteins promote reorganization of the actin cytoskeleton and regulate cell shape, attachment, and motility. The protein encoded by this gene is prenylated at its C-terminus, and localizes to the cytoplasm and plasma membrane. It is thought to be important in cell locomotion. Overexpression of this gene is associated with tumor cell proliferation and metastasis. Multiple alternatively spliced variants, encoding the same protein, have been identified. [provided by RefSeq, Jul 2008]

**Synonyms:**

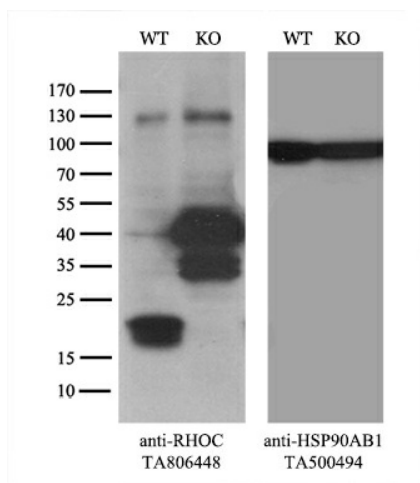
ARH9; ARHC; H9; RHOH9

**Protein Families:**

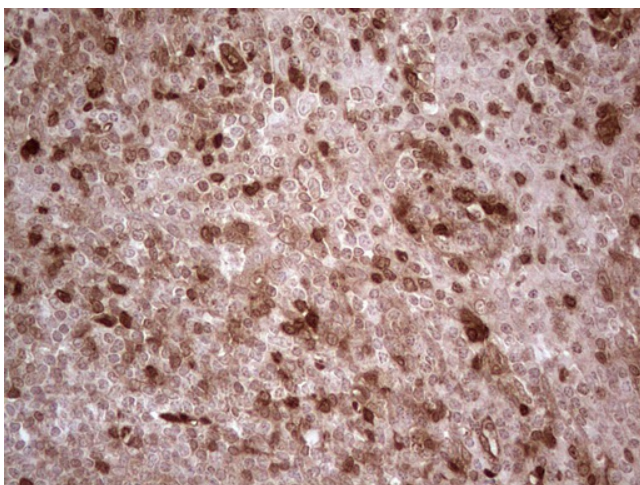
Druggable Genome

**Product images:**


HEK293T cells were transfected with the pCMV6-ENTRY control (Cat# [PS100001], Left lane) or pCMV6-ENTRY RHOC (Cat# [RC217556], Right lane) cDNA for 48 hrs and lysed. Equivalent amounts of cell lysates (5 ug per lane) were separated by SDS-PAGE and immunoblotted with anti-RHOC (Cat# [TA806448]). Positive lysates [LY403579] (100ug) and [LC403579] (20ug) can be purchased separately from OriGene.



Equivalent amounts of cell lysates (10 ug per lane) of wild-type 293T cells (WT, Cat# LC810293T) and RHOC-Knockout 293T cells (KO, Cat# [LC841328]) were separated by SDS-PAGE and immunoblotted with anti-RHOC monoclonal antibody [TA806448], (1:500). Then the blotted membrane was stripped and reprobed with anti-HSP90AB1 antibody ([TA500494]) as a loading control.



Immunohistochemical staining of paraffin-embedded Human tonsil within the normal limits using anti-RHOC mouse monoclonal antibody. Heat-induced epitope retrieval by EDTA solution buffer pH 8.0 at 120°C for 3 min.