

Product datasheet for **TA806438AM**

SHARP1 (BHLHE41) Mouse Monoclonal Antibody (Biotin conjugated) [Clone ID: OTI3A6]

Product data:

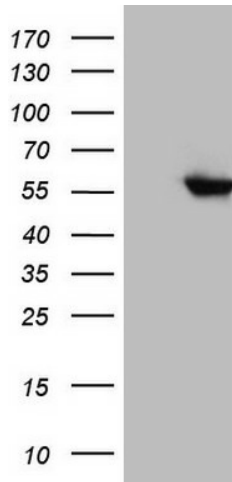
Product Type:	Primary Antibodies
Clone Name:	OTI3A6
Applications:	WB
Recommended Dilution:	WB 1:2000
Reactivity:	Human
Host:	Mouse
Isotype:	IgG2b
Clonality:	Monoclonal
Immunogen:	Human recombinant protein fragment corresponding to amino acids 1-297 of human BHLHE41(NP_110389) produced in E.coli.
Formulation:	PBS (pH 7.3) containing 1% BSA, 50% glycerol and 0.02% sodium azide.
Concentration:	0.5 mg/ml
Purification:	Purified from mouse ascites fluids or tissue culture supernatant by affinity chromatography (protein A/G)
Conjugation:	Biotin
Storage:	Store at -20°C as received.
Stability:	Stable for 12 months from date of receipt.
Predicted Protein Size:	50.3 kDa
Gene Name:	basic helix-loop-helix family member e41
Database Link:	NP_110389 Entrez Gene 79365 Human Q9C0J9
Background:	This gene encodes a basic helix-loop-helix protein expressed in various tissues. The encoded protein can interact with ARNTL or compete for E-box binding sites in the promoter of PER1 and repress CLOCK/ARNTL's transactivation of PER1. This gene is believed to be involved in the control of circadian rhythm and cell differentiation. Defects in this gene are associated with the short sleep phenotype. [provided by RefSeq, Feb 2014]



[View online »](#)

Synonyms: BHLHB3; DEC2; hDEC2; SHARP1
Protein Families: Transcription Factors
Protein Pathways: Circadian rhythm - mammal

Product images:



HEK293T cells were transfected with the pCMV6-ENTRY control (Left lane) or pCMV6-ENTRY BHLHE41 ([RC206882], Right lane) cDNA for 48 hrs and lysed. Equivalent amounts of cell lysates (5 ug per lane) were separated by SDS-PAGE and immunoblotted with anti-BHLHE41 (1:2000). Positive lysates [LY410724] (100ug) and [LC410724] (20ug) can be purchased separately from OriGene.