

## Product datasheet for **TA806419M**

### Lipin 1 (LPIN1) Mouse Monoclonal Antibody [Clone ID: OTI5H2]

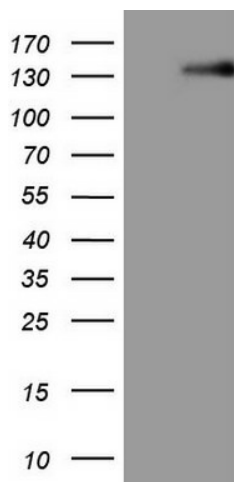
#### Product data:

Product Type:	Primary Antibodies
Clone Name:	OTI5H2
Applications:	IHC, WB
Recommended Dilution:	WB 1:2000
Reactivity:	Human, Mouse, Rat
Host:	Mouse
Isotype:	IgG2a
Clonality:	Monoclonal
Immunogen:	Human recombinant protein fragment corresponding to amino acids 1-274 of human LPIN1(NP_663731) produced in E.coli.
Formulation:	PBS (pH 7.3) containing 1% BSA, 50% glycerol and 0.02% sodium azide.
Concentration:	1 mg/ml
Purification:	Purified from mouse ascites fluids or tissue culture supernatant by affinity chromatography (protein A/G)
Conjugation:	Unconjugated
Storage:	Store at -20°C as received.
Stability:	Stable for 12 months from date of receipt.
Gene Name:	lipin 1
Database Link:	<a href="#">NP_663731</a> <a href="#">Entrez Gene 14245 Mouse</a> <a href="#">Entrez Gene 313977 Rat</a> <a href="#">Entrez Gene 23175 Human</a> <a href="#">Q14693</a>
Synonyms:	PAP1

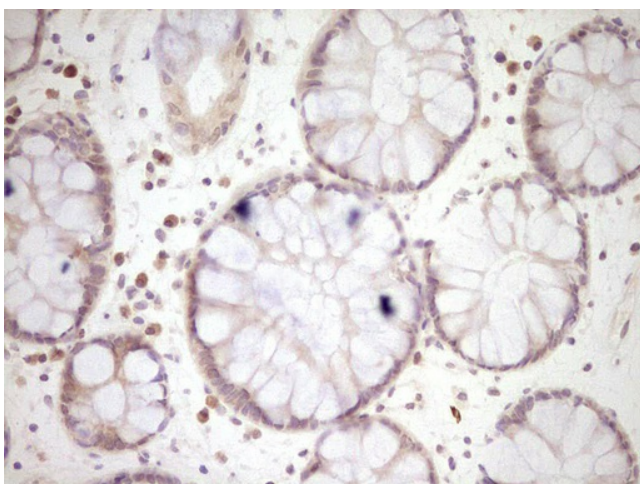


[View online »](#)

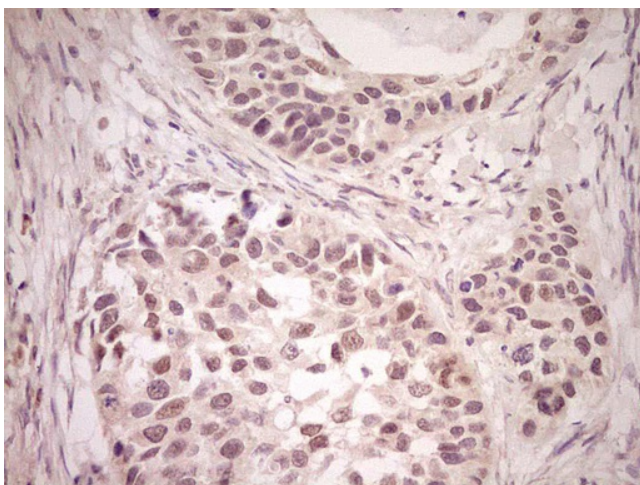
## Product images:



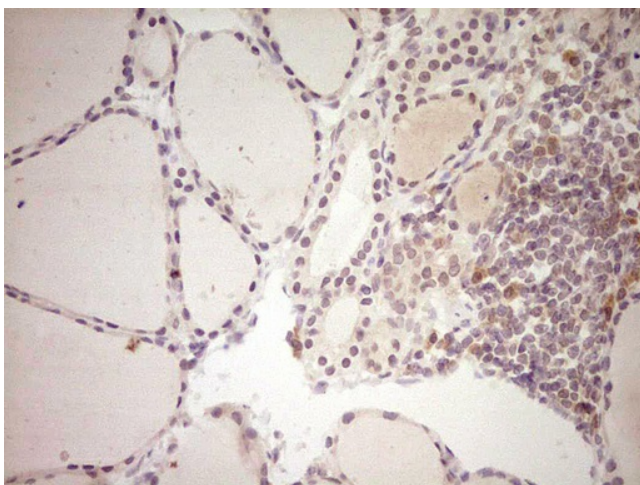
HEK293T cells were transfected with the pCMV6-ENTRY control (Left lane) or pCMV6-ENTRY LPIN1 ([RC207138], Right lane) cDNA for 48 hrs and lysed. Equivalent amounts of cell lysates (5 ug per lane) were separated by SDS-PAGE and immunoblotted with anti-LPIN1. Positive lysates [LY407897] (100ug) and [LC407897] (20ug) can be purchased separately from OriGene.



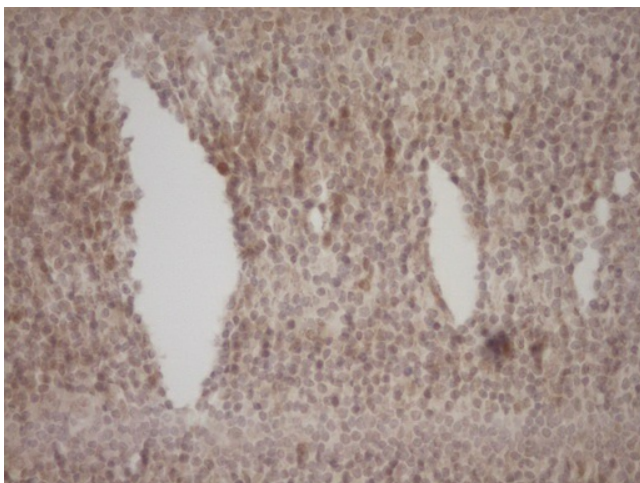
Immunohistochemical staining of paraffin-embedded Human colon tissue within the normal limits using anti-LPIN1 mouse monoclonal antibody Dilution: 1:150. Heat-induced epitope retrieval by EDTA solution buffer pH 8.0 at 120°C for 3 min.



Immunohistochemical staining of paraffin-embedded Carcinoma of Human kidney tissue using anti-LPIN1 mouse monoclonal antibody Dilution: 1:150. Heat-induced epitope retrieval by EDTA solution buffer pH 8.0 at 120°C for 3 min.



Immunohistochemical staining of paraffin-embedded Human thyroid tissue within the normal limits using anti-LPIN1 mouse monoclonal antibody Dilution: 1:150. Heat-induced epitope retrieval by EDTA solution buffer pH 8.0 at 120°C for 3 min.



Immunohistochemical staining of paraffin-embedded Human tonsil within the normal limits using anti-LPIN1 mouse monoclonal antibody Dilution: 1:150. Heat-induced epitope retrieval by EDTA solution buffer pH 8.0 at 120°C for 3 min.