

## Product datasheet for **TA806417S**

### Lipin 1 (LPIN1) Mouse Monoclonal Antibody [Clone ID: OTI4C11]

#### Product data:

Product Type:	Primary Antibodies
Clone Name:	OTI4C11
Applications:	IHC
Recommended Dilution:	IHC 1:150
Reactivity:	Human, Mouse, Rat
Host:	Mouse
Isotype:	IgG2b
Clonality:	Monoclonal
Immunogen:	Human recombinant protein fragment corresponding to amino acids 1-274 of human LPIN1(NP_663731) produced in E.coli.
Formulation:	PBS (pH 7.3) containing 1% BSA, 50% glycerol and 0.02% sodium azide.
Concentration:	1 mg/ml
Purification:	Purified from mouse ascites fluids or tissue culture supernatant by affinity chromatography (protein A/G)
Conjugation:	Unconjugated
Storage:	Store at -20°C as received.
Stability:	Stable for 12 months from date of receipt.
Predicted Protein Size:	98.5 kDa
Gene Name:	lipin 1
Database Link:	<a href="#">NP_663731</a> <a href="#">Entrez Gene 14245 Mouse</a> <a href="#">Entrez Gene 313977 Rat</a> <a href="#">Entrez Gene 23175 Human</a> <a href="#">Q14693</a>



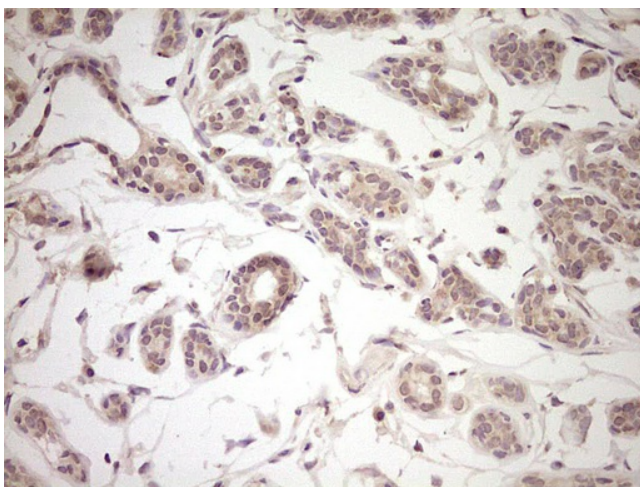
[View online »](#)

**Background:**

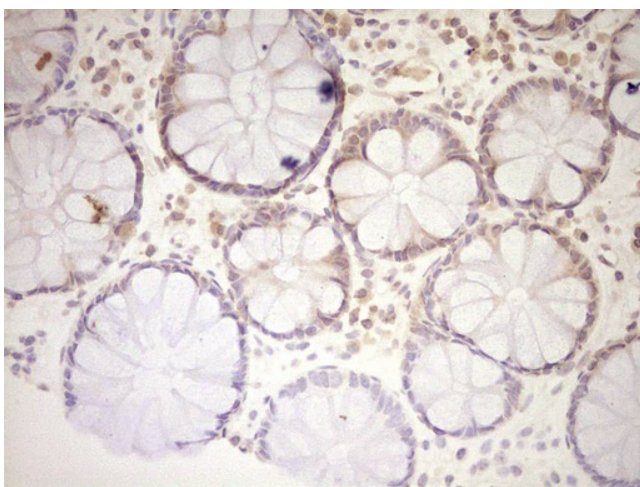
This gene encodes a magnesium-ion-dependent phosphatidic acid phosphohydrolase enzyme that catalyzes the penultimate step in triglyceride synthesis including the dephosphorylation of phosphatidic acid to yield diacylglycerol. Expression of this gene is required for adipocyte differentiation and it also functions as a nuclear transcriptional coactivator with some peroxisome proliferator-activated receptors to modulate expression of other genes involved in lipid metabolism. Mutations in this gene are associated with metabolic syndrome, type 2 diabetes, and autosomal recessive acute recurrent myoglobinuria (ARARM). This gene is also a candidate for several human lipodystrophy syndromes. Alternative splicing results in multiple transcript variants encoding distinct isoforms. Additional splice variants have been described but their full-length structures have not been determined. [provided by RefSeq, May 2012]

**Synonyms:**

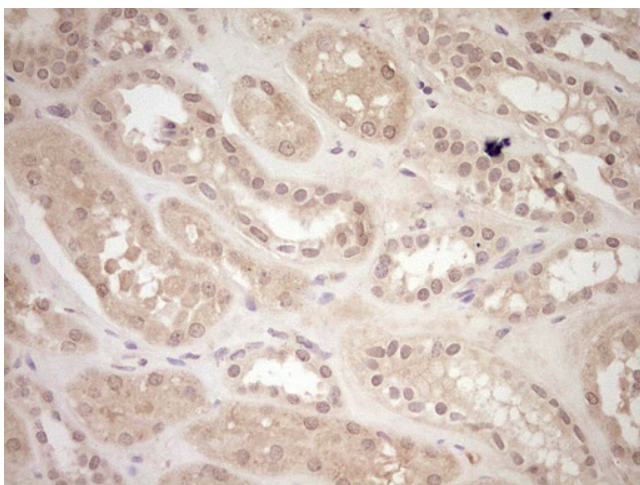
PAP1

**Product images:**

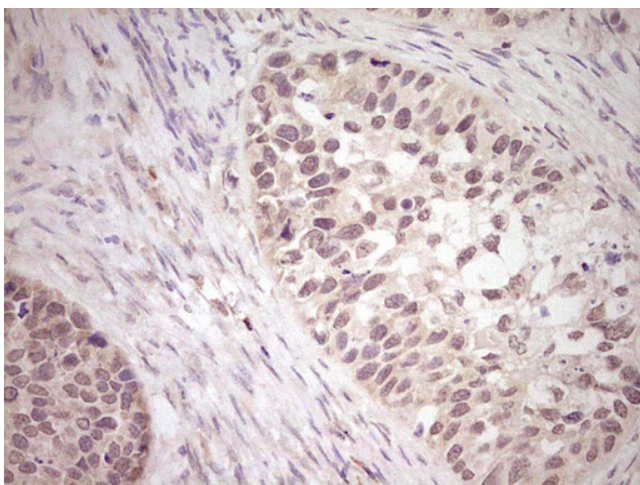
Immunohistochemical staining of paraffin-embedded Human breast tissue within the normal limits using anti-LPIN1 mouse monoclonal antibody. (Heat-induced epitope retrieval by 1mM EDTA in 10mM Tris, pH8.5, 120°C for 3min, [TA806417])



Immunohistochemical staining of paraffin-embedded Human colon tissue within the normal limits using anti-LPIN1 mouse monoclonal antibody. (Heat-induced epitope retrieval by 1mM EDTA in 10mM Tris, pH8.5, 120°C for 3min, [TA806417])



Immunohistochemical staining of paraffin-embedded Human Kidney tissue within the normal limits using anti-LPIN1 mouse monoclonal antibody. (Heat-induced epitope retrieval by 1mM EDTA in 10mM Tris, pH8.5, 120°C for 3min, [TA806417])



Immunohistochemical staining of paraffin-embedded Carcinoma of Human kidney tissue using anti-LPIN1 mouse monoclonal antibody. (Heat-induced epitope retrieval by 1mM EDTA in 10mM Tris, pH8.5, 120°C for 3min, [TA806417])