

## Product datasheet for **TA806413**

### TrkA (NTRK1) Mouse Monoclonal Antibody [Clone ID: OTI5B6]

#### Product data:

Product Type:	Primary Antibodies
Clone Name:	OTI5B6
Applications:	IHC, WB
Recommended Dilution:	WB 1:2000, IHC 1:150
Reactivity:	Human, Mouse, Rat
Host:	Mouse
Isotype:	IgG1
Clonality:	Monoclonal
Immunogen:	Human recombinant protein fragment corresponding to amino acids 440-796 of human NTRK1(NP_002520) produced in E.coli.
Formulation:	PBS (pH 7.3) containing 1% BSA, 50% glycerol and 0.02% sodium azide.
Concentration:	1 mg/ml
Purification:	Purified from mouse ascites fluids or tissue culture supernatant by affinity chromatography (protein A/G)
Conjugation:	Unconjugated
Storage:	Store at -20°C as received.
Stability:	Stable for 12 months from date of receipt.
Predicted Protein Size:	87.3 kDa
Gene Name:	neurotrophic receptor tyrosine kinase 1
Database Link:	<a href="#">NP_002520</a> <a href="#">Entrez Gene 18211 Mouse</a> <a href="#">Entrez Gene 59109 Rat</a> <a href="#">Entrez Gene 4914 Human</a> <a href="#">P04629</a>



[View online »](#)

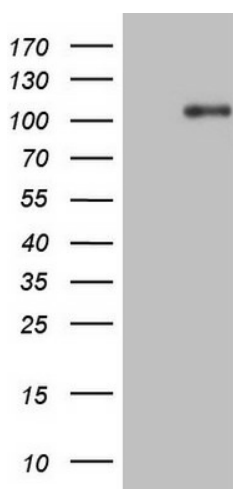
**Background:** This gene encodes a member of the neurotrophic tyrosine kinase receptor (NTRK) family. This kinase is a membrane-bound receptor that, upon neurotrophin binding, phosphorylates itself and members of the MAPK pathway. The presence of this kinase leads to cell differentiation and may play a role in specifying sensory neuron subtypes. Mutations in this gene have been associated with congenital insensitivity to pain, anhidrosis, self-mutilating behavior, mental retardation and cancer. Alternate transcriptional splice variants of this gene have been found, but only three have been characterized to date. [provided by RefSeq, Jul 2008]

**Synonyms:** MTC; p140-TrkA; TRK; Trk-A; TRK1; TRKA

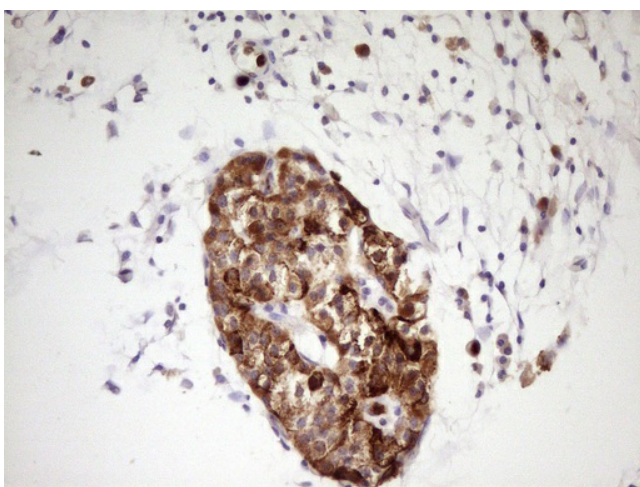
**Protein Families:** Druggable Genome, Protein Kinase, Transmembrane

**Protein Pathways:** Apoptosis, Endocytosis, MAPK signaling pathway, Neurotrophin signaling pathway, Pathways in cancer, Thyroid cancer

**Product images:**



HEK293T cells were transfected with the pCMV6-ENTRY control (Cat# [PS100001], Left lane) or pCMV6-ENTRY NTRK1 (Cat# [RC213047], Right lane) cDNA for 48 hrs and lysed. Equivalent amounts of cell lysates (5 ug per lane) were separated by SDS-PAGE and immunoblotted with anti-NTRK1 (Cat# TA806413). Positive lysates [LY419273] (100ug) and [LC419273] (20ug) can be purchased separately from OriGene.



Immunohistochemical staining of paraffin-embedded Carcinoma of Human pancreas tissue using anti-NTRK1 mouse monoclonal antibody. Heat-induced epitope retrieval by EDTA solution buffer pH 8.0 at 120°C for 3 min.