

Product datasheet for **TA806410AM**

ARID1A Mouse Monoclonal Antibody (Biotin conjugated) [Clone ID: OTI4D1]

Product data:

Product Type:	Primary Antibodies
Clone Name:	OTI4D1
Applications:	WB
Recommended Dilution:	WB 1:500
Reactivity:	Human, Mouse, Rat
Host:	Mouse
Isotype:	IgG2a
Clonality:	Monoclonal
Immunogen:	Human recombinant protein fragment corresponding to amino acids 1986-2285 of human ARID1A (NP_006006) produced in E.coli.
Formulation:	PBS (pH 7.3) containing 1% BSA, 50% glycerol and 0.02% sodium azide.
Concentration:	0.5 mg/ml
Purification:	Purified from mouse ascites fluids or tissue culture supernatant by affinity chromatography (protein A/G)
Conjugation:	Biotin
Storage:	Store at -20°C as received.
Stability:	Stable for 12 months from date of receipt.
Predicted Protein Size:	241.9 kDa
Gene Name:	AT-rich interaction domain 1A
Database Link:	NP_006006 Entrez Gene 93760 Mouse Entrez Gene 297867 Rat Entrez Gene 8289 Human O14497



[View online »](#)

Background:

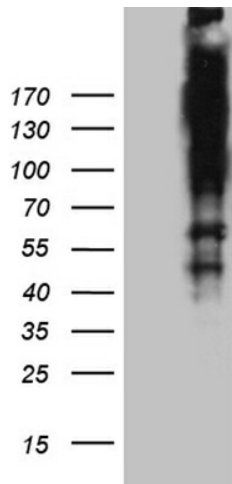
This gene encodes a member of the SWI/SNF family, whose members have helicase and ATPase activities and are thought to regulate transcription of certain genes by altering the chromatin structure around those genes. The encoded protein is part of the large ATP-dependent chromatin remodeling complex SNF/SWI, which is required for transcriptional activation of genes normally repressed by chromatin. It possesses at least two conserved domains that could be important for its function. First, it has a DNA-binding domain that can specifically bind an AT-rich DNA sequence known to be recognized by a SNF/SWI complex at the beta-globin locus. Second, the C-terminus of the protein can stimulate glucocorticoid receptor-dependent transcriptional activation. It is thought that the protein encoded by this gene confers specificity to the SNF/SWI complex and may recruit the complex to its targets through either protein-DNA or protein-protein interactions. Two transcript variants encoding different isoforms have been found for this gene. [provided by RefSeq, Jul 2008]

Synonyms:

B120; BAF250; BAF250a; BM029; C1orf4; ELD; hELD; hOSA1; MRD14; OSA1; P270; SMARCF1

Protein Families:

Druggable Genome

Product images:

HEK293T cells were transfected with the pCMV6-ENTRY control (Cat# [PS100001], Left lane) or pCMV6-ENTRY ARID1A (Cat# [RC218151], Right lane) cDNA for 48 hrs and lysed. Equivalent amounts of cell lysates (5 ug per lane) were separated by SDS-PAGE and immunoblotted with anti-ARID1 (Cat# [TA806410]). Positive lysates [LY416884] (100ug) and [LC416884] (20ug) can be purchased separately from OriGene.