

## Product datasheet for **TA806404BM**

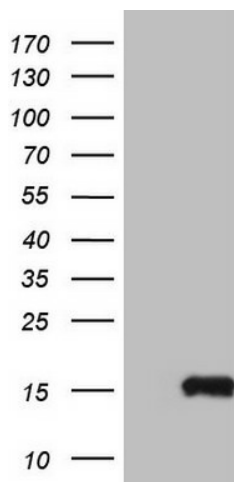
### MGP Mouse Monoclonal Antibody (HRP conjugated) [Clone ID: OTI9C9]

#### Product data:

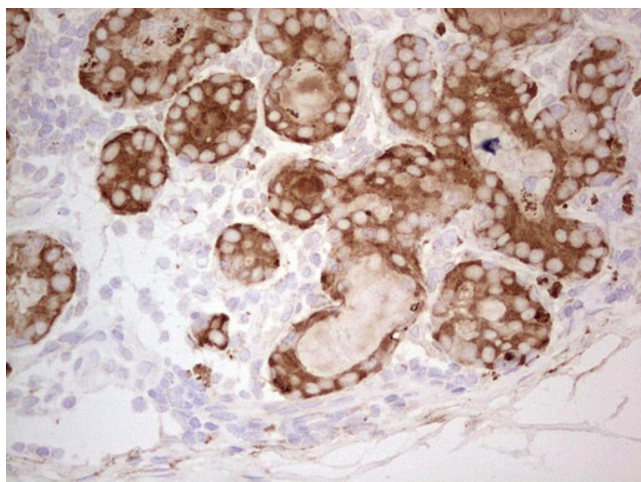
|                       |   |
|-----------------------|---|
| Product Type:         | Primary Antibodies  |
| Clone Name:           | OTI9C9  |
| Applications:         | IHC, WB   |
| Recommended Dilution: | WB 1:2000   |
| Reactivity:           | Human   |
| Host:                 | Mouse   |
| Isotype:              | IgG2a   |
| Clonality:            | Monoclonal  |
| Immunogen:            | Full length human recombinant protein of human MGP (NP_000891) produced in E.coli.  |
| Formulation:          | PBS (pH 7.3) containing 1% BSA, 50% glycerol.   |
| Concentration:        | 0.5 mg/ml   |
| Purification:         | Purified from mouse ascites fluids or tissue culture supernatant by affinity chromatography (protein A/G)   |
| Conjugation:          | HRP   |
| Storage:              | Store at -20°C as received.   |
| Stability:            | Stable for 12 months from date of receipt.  |
| Gene Name:            | matrix Gla protein  |
| Database Link:        | <a href="#">NP_000891</a><br><a href="#">Entrez Gene 4256 Human P08493</a>  |
| Background:           | The protein encoded by this gene is secreted and likely acts as an inhibitor of bone formation. The encoded protein is found in the organic matrix of bone and cartilage. Defects in this gene are a cause of Keutel syndrome (KS). Two transcript variants encoding different isoforms have been found for this gene. [provided by RefSeq, Jun 2010] |
| Synonyms:             | GIG36; MGLAP; NTI   |
| Protein Families:     | Secreted Protein  |



[View online »](#)

**Product images:**

HEK293T cells were transfected with the pCMV6-ENTRY control (Left lane) or pCMV6-ENTRY MGP (RC210666), Right lane) cDNA for 48 hrs and lysed. Equivalent amounts of cell lysates (5 ug per lane) were separated by SDS-PAGE and immunoblotted with anti-MGP. Positive lysates [LY400323] (100ug) and [LC400323] (20ug) can be purchased separately from OriGene.



Immunohistochemical staining of paraffin-embedded Adenocarcinoma of Human breast tissue using anti-MGP mouse monoclonal antibody. (Heat-induced epitope retrieval by Tris-EDTA, pH8.0, [TA806404]) Dilution: 1:150