

Product datasheet for **TA806398BM**

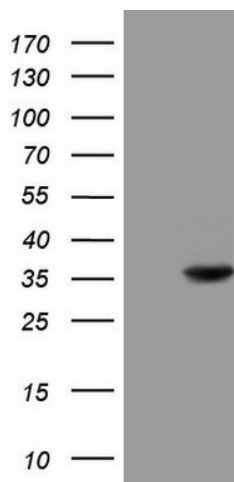
NR0B2 Mouse Monoclonal Antibody (HRP conjugated) [Clone ID: OTI2B6]

Product data:

Product Type:	Primary Antibodies
Clone Name:	OTI2B6
Applications:	WB
Recommended Dilution:	WB 1:2000
Reactivity:	Human
Host:	Mouse
Isotype:	IgG2a
Clonality:	Monoclonal
Immunogen:	Full length human recombinant protein of human NR0B2 (NP_068804) produced in E.coli.
Formulation:	PBS (pH 7.3) containing 1% BSA, 50% glycerol.
Concentration:	0.5 mg/ml
Purification:	Purified from mouse ascites fluids or tissue culture supernatant by affinity chromatography (protein A/G)
Conjugation:	HRP
Storage:	Store at -20°C as received.
Stability:	Stable for 12 months from date of receipt.
Gene Name:	nuclear receptor subfamily 0 group B member 2
Database Link:	NP_068804 Entrez Gene 8431 Human Q15466
Synonyms:	SHP; SHP1
Protein Families:	Druggable Genome, Transcription Factors



[View online »](#)

Product images:

HEK293T cells were transfected with the pCMV6-ENTRY control (Left lane) or pCMV6-ENTRY NR0B2 ([RC206422], Right lane) cDNA for 48 hrs and lysed. Equivalent amounts of cell lysates (5 ug per lane) were separated by SDS-PAGE and immunoblotted with anti-NR0B2 (1:2000). Positive lysates [LY402893] (100ug) and [LC402893] (20ug) can be purchased separately from OriGene.