

Product datasheet for **TA806396**

BOB1 (POU2AF1) Mouse Monoclonal Antibody [Clone ID: OTI1E11]

Product data:

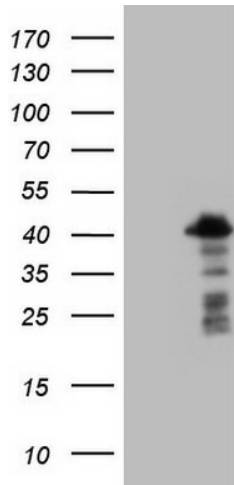
Product Type:	Primary Antibodies
Clone Name:	OTI1E11
Applications:	WB
Recommended Dilution:	WB 1:500~2000
Reactivity:	Human, Mouse, Rat
Host:	Mouse
Isotype:	IgG1
Clonality:	Monoclonal
Immunogen:	Full length human recombinant protein of human POU2AF1 (NP_006226) produced in HEK293T cell.
Formulation:	PBS (pH 7.3) containing 1% BSA, 50% glycerol and 0.02% sodium azide.
Concentration:	1 mg/ml
Purification:	Purified from mouse ascites fluids or tissue culture supernatant by affinity chromatography (protein A/G)
Conjugation:	Unconjugated
Storage:	Store at -20°C as received.
Stability:	Stable for 12 months from date of receipt.
Predicted Protein Size:	27.3 kDa
Gene Name:	POU class 2 associating factor 1
Database Link:	NP_006226 Entrez Gene 18985 Mouse Entrez Gene 690528 Rat Entrez Gene 5450 Human Q16633
Background:	Transcriptional coactivator that specifically associates with either OCT1 or OCT2. It boosts the OCT1 mediated promoter activity and to a lesser extent, that of OCT2. It has no intrinsic DNA-binding activity. It recognizes the POU domains of OCT1 and OCT2. It is essential for the response of B-cells to antigens and required for the formation of germinal centers. [UniProtKB/Swiss-Prot Function]



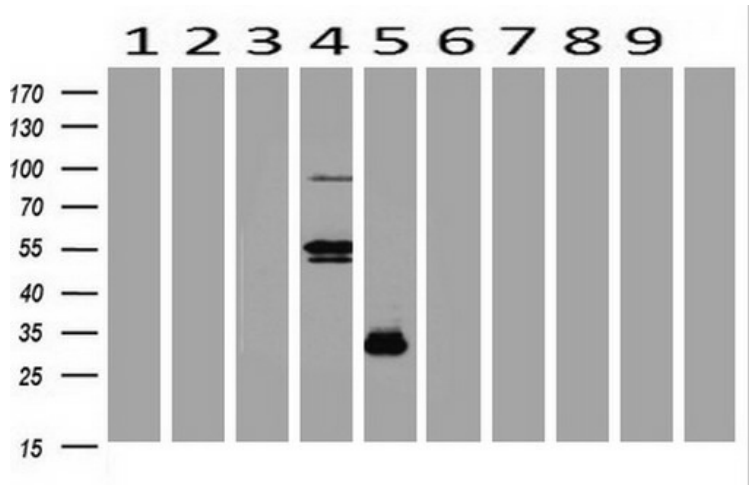
[View online »](#)

Synonyms: BOB1; OBF-1; OBF1; OCAB

Product images:



HEK293T cells were transfected with the pCMV6-ENTRY control (Left lane) or pCMV6-ENTRY POU2AF1 ([RC207562], Right lane) cDNA for 48 hrs and lysed. Equivalent amounts of cell lysates (5 ug per lane) were separated by SDS-PAGE and immunoblotted with anti-POU2AF1 (1:2000). Positive lysates [LY416779] (100ug) and [LC416779] (20ug) can be purchased separately from OriGene.



Western blot analysis of extracts (15ug) from 9 Human tissue by using anti-POU2AF1 monoclonal antibody (1: Testis; 2: Uterus; 3: Breast; 4: Brain; 5: Liver; 6: Ovary; 7: Thyroid gland; 8: colon;;9:Spleen) (1:500).