

Product datasheet for **TA806370**

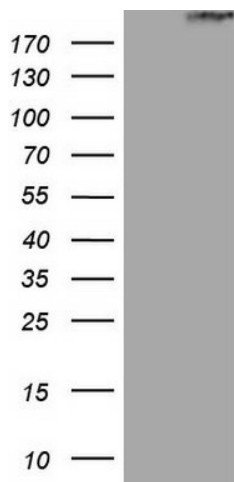
Stabilin 2 (STAB2) Mouse Monoclonal Antibody [Clone ID: OTI2A8]

Product data:

Product Type:	Primary Antibodies
Clone Name:	OTI2A8
Applications:	WB
Recommended Dilution:	WB 1:2000
Reactivity:	Human
Host:	Mouse
Isotype:	IgG1
Clonality:	Monoclonal
Immunogen:	Human recombinant protein fragment corresponding to amino acids 1914-2194 of human STAB2(NP_060034) produced in E.coli.
Formulation:	PBS (pH 7.3) containing 1% BSA, 50% glycerol and 0.02% sodium azide.
Concentration:	1 mg/ml
Purification:	Purified from mouse ascites fluids or tissue culture supernatant by affinity chromatography (protein A/G)
Conjugation:	Unconjugated
Storage:	Store at -20°C as received.
Stability:	Stable for 12 months from date of receipt.
Predicted Protein Size:	274.7 kDa
Gene Name:	stabilin 2
Database Link:	NP_060034 Entrez Gene 55576 Human Q8WWQ8
Synonyms:	FEEL2; FELE-2; FELL2; FEX2; HARE; SCARH1
Protein Families:	Druggable Genome, Transmembrane



[View online »](#)

Product images:

HEK293T cells were transfected with the pCMV6-ENTRY control (Left lane) or pCMV6-ENTRY STAB2 ([RC214781], Right lane) cDNA for 48 hrs and lysed. Equivalent amounts of cell lysates (5 ug per lane) were separated by SDS-PAGE and immunoblotted with anti-STAB2. Positive lysates [LY413706] (100ug) and [LC413706] (20ug) can be purchased separately from OriGene.