

Product datasheet for **TA806348BM**

CSNK1G1 Mouse Monoclonal Antibody (HRP conjugated) [Clone ID: OTI4C4]

Product data:

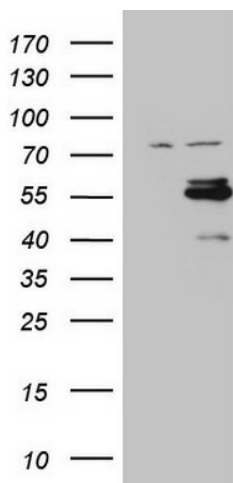
Product Type:	Primary Antibodies
Clone Name:	OTI4C4
Applications:	WB
Recommended Dilution:	WB 1:2000
Reactivity:	Human, Mouse, Rat
Host:	Mouse
Isotype:	IgG1
Clonality:	Monoclonal
Immunogen:	Human recombinant protein fragment corresponding to amino acids 163-422 of human CSNK1G1(NP_071331) produced in E.coli.
Formulation:	PBS (pH 7.3) containing 1% BSA, 50% glycerol.
Concentration:	0.5 mg/ml
Purification:	Purified from mouse ascites fluids or tissue culture supernatant by affinity chromatography (protein A/G)
Conjugation:	HRP
Storage:	Store at -20°C as received.
Stability:	Stable for 12 months from date of receipt.
Predicted Protein Size:	48.3 kDa
Gene Name:	casein kinase 1 gamma 1
Database Link:	NP_071331 Entrez Gene 64086 Rat Entrez Gene 214897 Mouse Entrez Gene 53944 Human Q9HCP0
Background:	This gene encodes a member of the casein kinase I gene family. The encoded protein is a serine/threonine kinase that phosphorylates acidic proteins, and participates in pathways for cell growth. [provided by RefSeq, Nov 2011]
Synonyms:	CK1gamma1
Protein Families:	Druggable Genome, Protein Kinase



[View online »](#)

Protein Pathways: Hedgehog signaling pathway

Product images:



HEK293T cells were transfected with the pCMV6-ENTRY control (Left lane) or pCMV6-ENTRY CSNK1G1 ([RC224794], Right lane) cDNA for 48 hrs and lysed. Equivalent amounts of cell lysates (5 ug per lane) were separated by SDS-PAGE and immunoblotted with anti-CSNK1G1. Positive lysates [LY411816] (100ug) and [LC411816] (20ug) can be purchased separately from OriGene.