

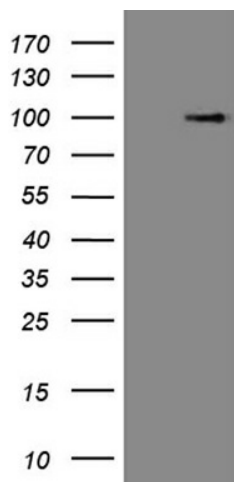
Product datasheet for **TA806347M**

INAVA Mouse Monoclonal Antibody [Clone ID: OTI14A10]

Product data:

Product Type:	Primary Antibodies
Clone Name:	OTI14A10
Applications:	WB
Recommended Dilution:	WB 1:2000
Reactivity:	Human
Host:	Mouse
Isotype:	IgG1
Clonality:	Monoclonal
Immunogen:	Human recombinant protein fragment corresponding to amino acids 1-270 of human C1ORF106(NP_060735) produced in E.coli.
Formulation:	PBS (pH 7.3) containing 1% BSA, 50% glycerol and 0.02% sodium azide.
Concentration:	1 mg/ml
Purification:	Purified from mouse ascites fluids or tissue culture supernatant by affinity chromatography (protein A/G)
Conjugation:	Unconjugated
Storage:	Store at -20°C as received.
Stability:	Stable for 12 months from date of receipt.
Predicted Protein Size:	72.7 kDa
Gene Name:	chromosome 1 open reading frame 106
Database Link:	NP_060735 Entrez Gene 55765 Human Q3KP66
Synonyms:	FLJ10901; MGC125608

[View online »](#)

Product images:


HEK293T cells were transfected with the pCMV6-ENTRY control (Left lane) or pCMV6-ENTRY C1orf106 ([RC215863], Right lane) cDNA for 48 hrs and lysed. Equivalent amounts of cell lysates (5 ug per lane) were separated by SDS-PAGE and immunoblotted with anti-C1orf106 (1:2000). Positive lysates [LY413177] (100ug) and [LC413177] (20ug) can be purchased separately from OriGene.