

Product datasheet for **TA806342AM**

SREBP2 (SREBF2) Mouse Monoclonal Antibody (Biotin conjugated) [Clone ID: OTI4G1]

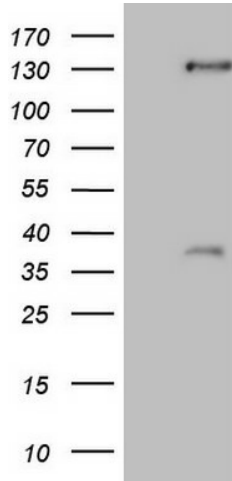
Product data:

Product Type:	Primary Antibodies
Clone Name:	OTI4G1
Applications:	WB
Recommended Dilution:	WB 1:2000
Reactivity:	Human, Mouse, Rat
Host:	Mouse
Isotype:	IgG1
Clonality:	Monoclonal
Immunogen:	Human recombinant protein fragment corresponding to amino acids 117-380 of human SREBF2(NP_004590) produced in E.coli.
Formulation:	PBS (pH 7.3) containing 1% BSA, 50% glycerol and 0.02% sodium azide.
Concentration:	0.5 mg/ml
Purification:	Purified from mouse ascites fluids or tissue culture supernatant by affinity chromatography (protein A/G)
Conjugation:	Biotin
Storage:	Store at -20°C as received.
Stability:	Stable for 12 months from date of receipt.
Gene Name:	sterol regulatory element binding transcription factor 2
Database Link:	NP_004590 Entrez Gene 20788 Mouse Entrez Gene 300095 Rat Entrez Gene 6721 Human Q12772
Synonyms:	bHLHd2; SREBP-2; SREBP2
Protein Families:	Druggable Genome, Transcription Factors



[View online »](#)

Product images:



HEK293T cells were transfected with the pCMV6-ENTRY control (Cat# [PS100001], Left lane) or pCMV6-ENTRY SREBF2 (Cat# [RC208942], Right lane) cDNA for 48 hrs and lysed. Equivalent amounts of cell lysates (5 ug per lane) were separated by SDS-PAGE and immunoblotted with anti-SREBF2(Cat# [TA806342]). Positive lysates [LY417881] (100ug) and [LC417881] (20ug) can be purchased separately from OriGene.