

## Product datasheet for **TA806330M**

### **RANTES (CCL5) Mouse Monoclonal Antibody [Clone ID: OTI2A7]**

#### **Product data:**

Product Type:	Primary Antibodies
Clone Name:	OTI2A7
Applications:	WB
Recommended Dilution:	WB 1:2000
Reactivity:	Human
Host:	Mouse
Isotype:	IgG1
Clonality:	Monoclonal
Immunogen:	Full length human recombinant protein of human CCL5 (NP_002976) produced in HEK293T cell.
Formulation:	PBS (pH 7.3) containing 1% BSA, 50% glycerol and 0.02% sodium azide.
Concentration:	1 mg/ml
Purification:	Purified from mouse ascites fluids or tissue culture supernatant by affinity chromatography (protein A/G)
Conjugation:	Unconjugated
Storage:	Store at -20°C as received.
Stability:	Stable for 12 months from date of receipt.
Predicted Protein Size:	7.8 kDa
Gene Name:	C-C motif chemokine ligand 5
Database Link:	<a href="#">NP_002976</a> <a href="#">Entrez Gene 6352 Human</a> <a href="#">P13501</a>

[View online »](#)

**Background:**

This gene is one of several chemokine genes clustered on the q-arm of chromosome 17. Chemokines form a superfamily of secreted proteins involved in immunoregulatory and inflammatory processes. The superfamily is divided into four subfamilies based on the arrangement of the N-terminal cysteine residues of the mature peptide. This chemokine, a member of the CC subfamily, functions as a chemoattractant for blood monocytes, memory T helper cells and eosinophils. It causes the release of histamine from basophils and activates eosinophils. This cytokine is one of the major HIV-suppressive factors produced by CD8+ cells. It functions as one of the natural ligands for the chemokine receptor chemokine (C-C motif) receptor 5 (CCR5), and it suppresses in vitro replication of the R5 strains of HIV-1, which use CCR5 as a coreceptor. Alternative splicing results in multiple transcript variants that encode different isoforms. [provided by RefSeq, Jul

**Synonyms:**

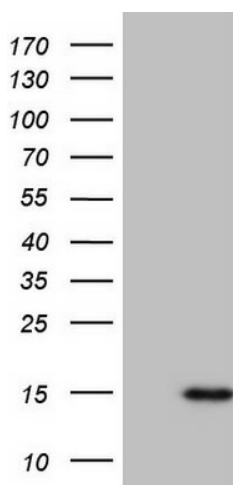
D17S136E; eoCP; RANTES; SCYA5; SIS-delta; SISd; TCP228

**Protein Families:**

Druggable Genome, Secreted Protein, Transmembrane

**Protein Pathways:**

Chemokine signaling pathway, Cytokine-cytokine receptor interaction, Cytosolic DNA-sensing pathway, Epithelial cell signaling in Helicobacter pylori infection, NOD-like receptor signaling pathway, Prion diseases, Toll-like receptor signaling pathway

**Product images:**


HEK293T cells were transfected with the pCMV6-ENTRY control (Cat# [PS100001], Left lane) or pCMV6-ENTRY CCL5 (Cat# [RC203799], Right lane) cDNA for 48 hrs and lysed. Equivalent amounts of cell lysates (5 ug per lane) were separated by SDS-PAGE and immunoblotted with anti-CCL5 (Cat# [TA806330]). Positive lysates [LY401044] (100ug) and [LC401044] (20ug) can be purchased separately from OriGene.