

## Product datasheet for **TA806326BM**

### Cyclin D2 (CCND2) Mouse Monoclonal Antibody (HRP conjugated) [Clone ID: OTI10E11]

#### Product data:

Product Type:	Primary Antibodies
Clone Name:	OTI10E11
Applications:	WB
Recommended Dilution:	WB 1:2000
Reactivity:	Human, Mouse, Rat
Host:	Mouse
Isotype:	IgG2b
Clonality:	Monoclonal
Immunogen:	Full length human recombinant protein of human CCND2 (NP_001750) produced in E.coli.
Formulation:	PBS (pH 7.3) containing 1% BSA, 50% glycerol.
Concentration:	0.5 mg/ml
Purification:	Purified from mouse ascites fluids or tissue culture supernatant by affinity chromatography (protein A/G)
Conjugation:	HRP
Storage:	Store at -20°C as received.
Stability:	Stable for 12 months from date of receipt.
Predicted Protein Size:	32.9 kDa
Gene Name:	cyclin D2
Database Link:	<a href="#">NP_001750</a> <a href="#">Entrez Gene 12444 Mouse</a> <a href="#">Entrez Gene 64033 Rat</a> <a href="#">Entrez Gene 894 Human</a> <a href="#">P30279</a>



[View online »](#)

**Background:**

The protein encoded by this gene belongs to the highly conserved cyclin family, whose members are characterized by a dramatic periodicity in protein abundance through the cell cycle. Cyclins function as regulators of CDK kinases. Different cyclins exhibit distinct expression and degradation patterns which contribute to the temporal coordination of each mitotic event. This cyclin forms a complex with and functions as a regulatory subunit of CDK4 or CDK6, whose activity is required for cell cycle G1/S transition. This protein has been shown to interact with and be involved in the phosphorylation of tumor suppressor protein Rb. Knockout studies of the homologous gene in mouse suggest the essential roles of this gene in ovarian granulosa and germ cell proliferation. High level expression of this gene was observed in ovarian and testicular tumors. [provided by RefSeq, Oct 2008]

**Synonyms:**

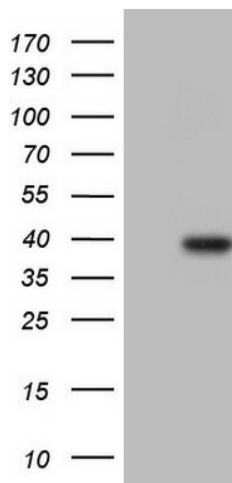
KIAK0002; MPPH3

**Protein Families:**

Druggable Genome

**Protein Pathways:**

Cell cycle, Focal adhesion, Jak-STAT signaling pathway, p53 signaling pathway, Wnt signaling pathway

**Product images:**

HEK293T cells were transfected with the pCMV6-ENTRY control (Cat# [PS100001], Left lane) or pCMV6-ENTRY CCND2 (Cat# [RC210316], Right lane) cDNA for 48 hrs and lysed. Equivalent amounts of cell lysates (5 ug per lane) were separated by SDS-PAGE and immunoblotted with anti-CCND2 (Cat# [TA806326]). Positive lysates [LY419750] (100ug) and [LC419750] (20ug) can be purchased separately from OriGene.