

## Product datasheet for **TA806322AM**

### **HOMER2 Mouse Monoclonal Antibody (Biotin conjugated) [Clone ID: OTI2B3]**

#### **Product data:**

|                                |                                                                                                                                                                                                                                                                                                                                                                                  |
|--------------------------------|----------------------------------------------------------------------------------------------------------------------------------------------------------------------------------------------------------------------------------------------------------------------------------------------------------------------------------------------------------------------------------|
| <b>Product Type:</b>           | Primary Antibodies                                                                                                                                                                                                                                                                                                                                                               |
| <b>Clone Name:</b>             | OTI2B3                                                                                                                                                                                                                                                                                                                                                                           |
| <b>Applications:</b>           | WB                                                                                                                                                                                                                                                                                                                                                                               |
| <b>Recommended Dilution:</b>   | WB 1:2000                                                                                                                                                                                                                                                                                                                                                                        |
| <b>Reactivity:</b>             | Human, Mouse, Rat                                                                                                                                                                                                                                                                                                                                                                |
| <b>Host:</b>                   | Mouse                                                                                                                                                                                                                                                                                                                                                                            |
| <b>Isotype:</b>                | IgG2a                                                                                                                                                                                                                                                                                                                                                                            |
| <b>Clonality:</b>              | Monoclonal                                                                                                                                                                                                                                                                                                                                                                       |
| <b>Immunogen:</b>              | Full length human recombinant protein of human HOMER2 (NP_004830) produced in HEK293T cell.                                                                                                                                                                                                                                                                                      |
| <b>Formulation:</b>            | PBS (pH 7.3) containing 1% BSA, 50% glycerol and 0.02% sodium azide.                                                                                                                                                                                                                                                                                                             |
| <b>Concentration:</b>          | 0.5 mg/ml                                                                                                                                                                                                                                                                                                                                                                        |
| <b>Purification:</b>           | Purified from mouse ascites fluids or tissue culture supernatant by affinity chromatography (protein A/G)                                                                                                                                                                                                                                                                        |
| <b>Conjugation:</b>            | Biotin                                                                                                                                                                                                                                                                                                                                                                           |
| <b>Storage:</b>                | Store at -20°C as received.                                                                                                                                                                                                                                                                                                                                                      |
| <b>Stability:</b>              | Stable for 12 months from date of receipt.                                                                                                                                                                                                                                                                                                                                       |
| <b>Predicted Protein Size:</b> | 39.3 kDa                                                                                                                                                                                                                                                                                                                                                                         |
| <b>Gene Name:</b>              | homer scaffolding protein 2                                                                                                                                                                                                                                                                                                                                                      |
| <b>Database Link:</b>          | <a href="#">NP_004830</a><br><a href="#">Entrez Gene 26557 Mouse</a> <a href="#">Entrez Gene 29547 Rat</a> <a href="#">Entrez Gene 9455 Human</a><br><a href="#">Q9NSB8</a>                                                                                                                                                                                                      |
| <b>Background:</b>             | This gene encodes a member of the homer family of dendritic proteins. Members of this family regulate group 1 metabotropic glutamate receptor function. The encoded protein is a postsynaptic density scaffolding protein. Alternative splicing results in multiple transcript variants. Two related pseudogenes have been identified on chromosome 14. [provided by RefSeq, Jun |

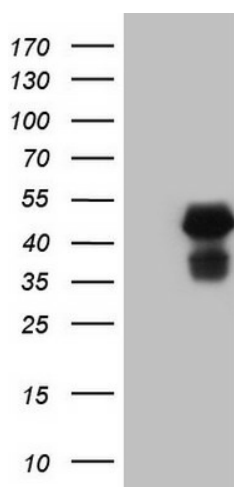


[View online »](#)

Synonyms: ACPD; CPD; DFNA68; HOMER-2; VESL-2

Protein Families: Druggable Genome

### Product images:



HEK293T cells were transfected with the pCMV6-ENTRY control (Left lane) or pCMV6-ENTRY HOMER2 ([RC204165], Right lane) cDNA for 48 hrs and lysed. Equivalent amounts of cell lysates (5 ug per lane) were separated by SDS-PAGE and immunoblotted with anti-HOMER2. Positive lysates [LY401516] (100ug) and [LC401516] (20ug) can be purchased separately from OriGene.