

## Product datasheet for **TA806313AM**

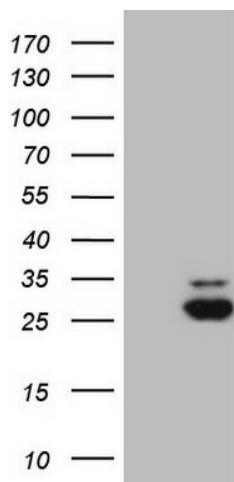
### **MRRF Mouse Monoclonal Antibody (Biotin conjugated) [Clone ID: OTI5C11]**

#### **Product data:**

Product Type:	Primary Antibodies
Clone Name:	OTI5C11
Applications:	WB
Recommended Dilution:	WB 1:2000
Reactivity:	Human, Mouse, Rat
Host:	Mouse
Isotype:	IgG1
Clonality:	Monoclonal
Immunogen:	Human recombinant protein fragment corresponding to amino acids 56-262 of human MRRF(NP_620132) produced in E.coli.
Formulation:	PBS (pH 7.3) containing 1% BSA, 50% glycerol and 0.02% sodium azide.
Concentration:	0.5 mg/ml
Purification:	Purified from mouse ascites fluids or tissue culture supernatant by affinity chromatography (protein A/G)
Conjugation:	Biotin
Storage:	Store at -20°C as received.
Stability:	Stable for 12 months from date of receipt.
Predicted Protein Size:	29.1 kDa
Gene Name:	mitochondrial ribosome recycling factor
Database Link:	<a href="#">NP_620132</a> <a href="#">Entrez Gene 67871 Mouse</a> <a href="#">Entrez Gene 311903 Rat</a> <a href="#">Entrez Gene 92399 Human</a> <a href="#">Q96E11</a>
Synonyms:	MRFF; MTRRF; RRF
Protein Families:	Transmembrane



[View online »](#)

**Product images:**

HEK293T cells were transfected with the pCMV6-ENTRY control (Left lane) or pCMV6-ENTRY MRRF ([RC203909], Right lane) cDNA for 48 hrs and lysed. Equivalent amounts of cell lysates (5 ug per lane) were separated by SDS-PAGE and immunoblotted with anti-MRRF (1:2000). Positive lysates [LY408516] (100ug) and [LC408516] (20ug) can be purchased separately from OriGene.