

## Product datasheet for TA806311M

### HOMER2 Mouse Monoclonal Antibody [Clone ID: OTI1H3]

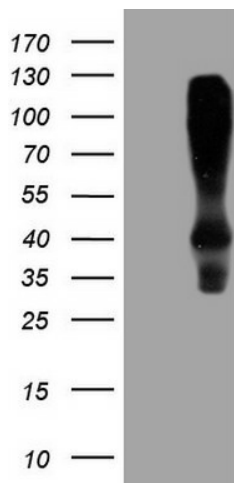
#### Product data:

Product Type:	Primary Antibodies
Clone Name:	OTI1H3
Applications:	WB
Recommended Dilution:	WB 1:2000
Reactivity:	Human, Mouse, Rat
Host:	Mouse
Isotype:	IgG1
Clonality:	Monoclonal
Immunogen:	Full length human recombinant protein of human HOMER2(NP_004830) produced in E.coli.
Formulation:	PBS (pH 7.3) containing 1% BSA, 50% glycerol and 0.02% sodium azide.
Concentration:	1 mg/ml
Purification:	Purified from mouse ascites fluids or tissue culture supernatant by affinity chromatography (protein A/G)
Conjugation:	Unconjugated
Storage:	Store at -20°C as received.
Stability:	Stable for 12 months from date of receipt.
Predicted Protein Size:	39.3 kDa
Gene Name:	homer scaffolding protein 2
Database Link:	<a href="#">NP_004830</a> <a href="#">Entrez Gene 26557 Mouse</a> <a href="#">Entrez Gene 29547 Rat</a> <a href="#">Entrez Gene 9455 Human</a> <a href="#">Q9NSB8</a>
Background:	This gene encodes a member of the homer family of dendritic proteins. Members of this family regulate group 1 metabotropic glutamate receptor function. The encoded protein is a postsynaptic density scaffolding protein. Alternative splicing results in multiple transcript variants. Two related pseudogenes have been identified on chromosome 14. [provided by RefSeq, Jun 2011]
Synonyms:	ACPD; CPD; DFNA68; HOMER-2; VESL-2


[View online »](#)

Protein Families: Druggable Genome

### Product images:



HEK293T cells were transfected with the pCMV6-ENTRY control (Left lane) or pCMV6-ENTRY HOMER2 ([RC204165], Right lane) cDNA for 48 hrs and lysed. Equivalent amounts of cell lysates (5 ug per lane) were separated by SDS-PAGE and immunoblotted with anti-HOMER2 (1:2000). Positive lysates [LY401516] (100ug) and [LC401516] (20ug) can be purchased separately from OriGene.