

Product datasheet for **TA806283S**

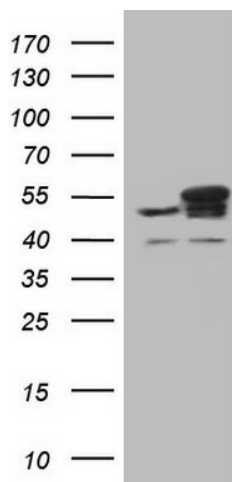
YB1 (YBX1) Mouse Monoclonal Antibody [Clone ID: OTI11A7]

Product data:

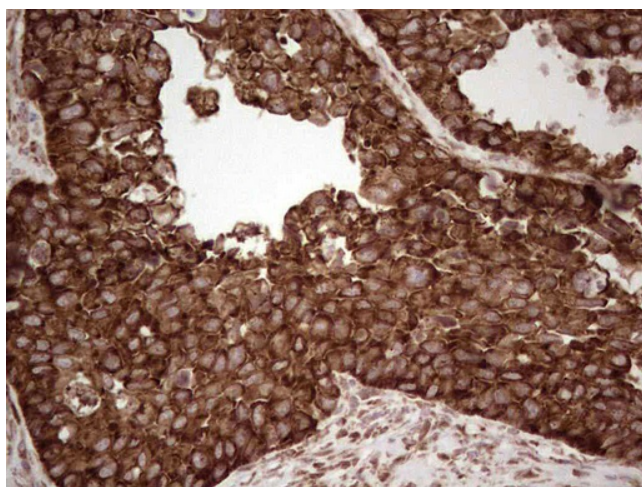
Product Type:	Primary Antibodies
Clone Name:	OTI11A7
Applications:	IHC, WB
Recommended Dilution:	WB 1:2000, IHC 1:150
Reactivity:	Human, Mouse, Rat
Host:	Mouse
Isotype:	IgG1
Clonality:	Monoclonal
Immunogen:	Full length human recombinant protein of human YBX1 (NP_004550) produced in E.coli.
Formulation:	PBS (pH 7.3) containing 1% BSA, 50% glycerol and 0.02% sodium azide.
Concentration:	1 mg/ml
Purification:	Purified from mouse ascites fluids or tissue culture supernatant by affinity chromatography (protein A/G)
Conjugation:	Unconjugated
Storage:	Store at -20°C as received.
Stability:	Stable for 12 months from date of receipt.
Predicted Protein Size:	35.7 kDa
Gene Name:	Y-box binding protein 1
Database Link:	NP_004550 Entrez Gene 22608 Mouse Entrez Gene 500538 Rat Entrez Gene 4904 Human P67809
Synonyms:	BP-8; CSDA2; CSDB; DBPB; MDR-NF1; NSEP-1; NSEP1; YB-1; YB1
Protein Families:	ES Cell Differentiation/IPS, Transcription Factors



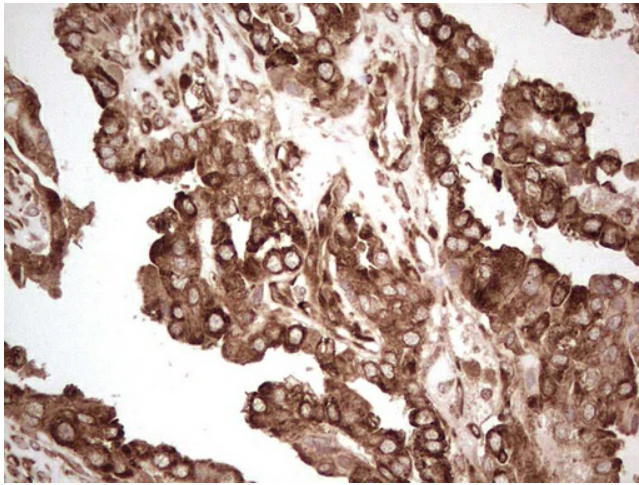
[View online »](#)

Product images:

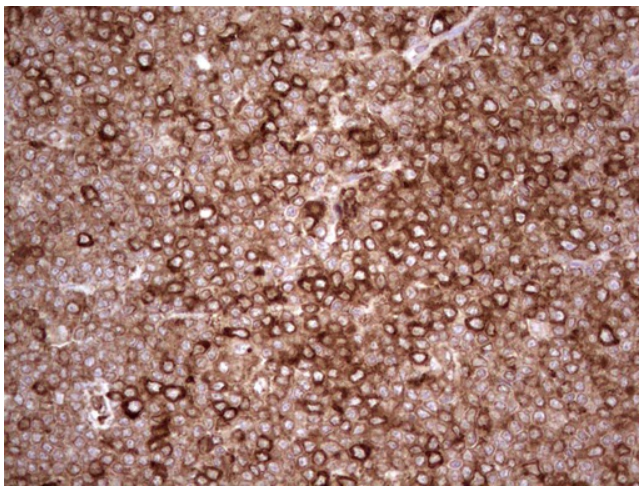
HEK293T cells were transfected with the pCMV6-ENTRY control (Cat# [PS100001], Left lane) or pCMV6-ENTRY YBX1 (Cat# [RC209835], Right lane) cDNA for 48 hrs and lysed. Equivalent amounts of cell lysates (5 ug per lane) were separated by SDS-PAGE and immunoblotted with anti-YBX1 (Cat# [TA806283]). Positive lysates [LY417905] (100ug) and [LC417905] (20ug) can be purchased separately from OriGene.



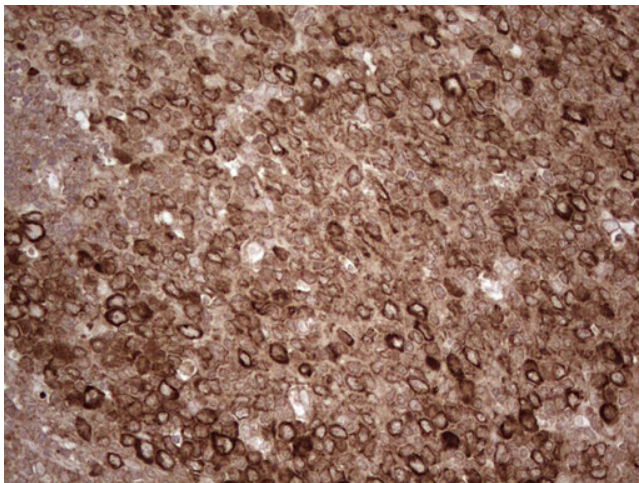
Immunohistochemical staining of paraffin-embedded Carcinoma of Human kidney tissue using anti-YBX1 mouse monoclonal antibody. (Heat-induced epitope retrieval by 1mM EDTA in 10mM Tris, pH8.5, 120°C for 3min, [TA806283])



Immunohistochemical staining of paraffin-embedded Adenocarcinoma of Human ovary tissue using anti-YBX1 mouse monoclonal antibody. (Heat-induced epitope retrieval by 1mM EDTA in 10mM Tris, pH8.5, 120°C for 3min, [TA806283])



Immunohistochemical staining of paraffin-embedded Human lymphoma tissue using anti-YBX1 mouse monoclonal antibody. (Heat-induced epitope retrieval by 1mM EDTA in 10mM Tris, pH8.5, 120°C for 3min, [TA806283])



Immunohistochemical staining of paraffin-embedded Human tonsil within the normal limits using anti-YBX1 mouse monoclonal antibody. (Heat-induced epitope retrieval by 1mM EDTA in 10mM Tris, pH8.5, 120°C for 3min, [TA806283])