

## Product datasheet for **TA806281M**

### SHARP1 (BHLHE41) Mouse Monoclonal Antibody [Clone ID: OTI11B5]

#### Product data:

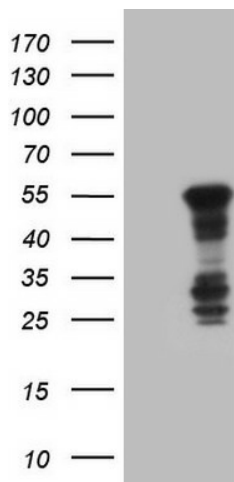
Product Type:	Primary Antibodies
Clone Name:	OTI11B5
Applications:	WB
Recommended Dilution:	WB 1:2000
Reactivity:	Human
Host:	Mouse
Isotype:	IgG1
Clonality:	Monoclonal
Immunogen:	Human recombinant protein fragment corresponding to amino acids 1-297 of human BHLHE41(NP_110389) produced in E.coli.
Formulation:	PBS (pH 7.3) containing 1% BSA, 50% glycerol and 0.02% sodium azide.
Concentration:	1 mg/ml
Purification:	Purified from mouse ascites fluids or tissue culture supernatant by affinity chromatography (protein A/G)
Conjugation:	Unconjugated
Storage:	Store at -20°C as received.
Stability:	Stable for 12 months from date of receipt.
Predicted Protein Size:	50.3 kDa
Gene Name:	basic helix-loop-helix family member e41
Database Link:	<a href="#">NP_110389</a> <a href="#">Entrez Gene 79365 Human</a> <a href="#">Q9C0J9</a>
Background:	This gene encodes a basic helix-loop-helix protein expressed in various tissues. The encoded protein can interact with ARNTL or compete for E-box binding sites in the promoter of PER1 and repress CLOCK/ARNTL's transactivation of PER1. This gene is believed to be involved in the control of circadian rhythm and cell differentiation. Defects in this gene are associated with the short sleep phenotype. [provided by RefSeq, Feb 2014]



[View online »](#)

**Synonyms:** BHLHB3; DEC2; hDEC2; SHARP1  
**Protein Families:** Transcription Factors  
**Protein Pathways:** Circadian rhythm - mammal

**Product images:**



HEK293T cells were transfected with the pCMV6-ENTRY control (Left lane) or pCMV6-ENTRY BHLHE41 ([RC206882], Right lane) cDNA for 48 hrs and lysed. Equivalent amounts of cell lysates (5 ug per lane) were separated by SDS-PAGE and immunoblotted with anti-BHLHE41. Positive lysates [LY410724] (100ug) and [LC410724] (20ug) can be purchased separately from OriGene.