

Product datasheet for **TA806281**

SHARP1 (BHLHE41) Mouse Monoclonal Antibody [Clone ID: OTI11B5]

Product data:

| | |
|-------------------------|---|
| Product Type: | Primary Antibodies |
| Clone Name: | OTI11B5 |
| Applications: | WB |
| Recommended Dilution: | WB 1:2000 |
| Reactivity: | Human |
| Host: | Mouse |
| Isotype: | IgG1 |
| Clonality: | Monoclonal |
| Immunogen: | Human recombinant protein fragment corresponding to amino acids 1-297 of human BHLHE41(NP_110389) produced in E.coli. |
| Formulation: | PBS (pH 7.3) containing 1% BSA, 50% glycerol and 0.02% sodium azide. |
| Concentration: | 1 mg/ml |
| Purification: | Purified from mouse ascites fluids or tissue culture supernatant by affinity chromatography (protein A/G) |
| Conjugation: | Unconjugated |
| Storage: | Store at -20°C as received. |
| Stability: | Stable for 12 months from date of receipt. |
| Predicted Protein Size: | 50.3 kDa |
| Gene Name: | basic helix-loop-helix family member e41 |
| Database Link: | NP_110389 Entrez Gene 79365 Human Q9C0J9 |
| Background: | This gene encodes a basic helix-loop-helix protein expressed in various tissues. The encoded protein can interact with ARNTL or compete for E-box binding sites in the promoter of PER1 and repress CLOCK/ARNTL's transactivation of PER1. This gene is believed to be involved in the control of circadian rhythm and cell differentiation. Defects in this gene are associated with the short sleep phenotype. [provided by RefSeq, Feb 2014] |



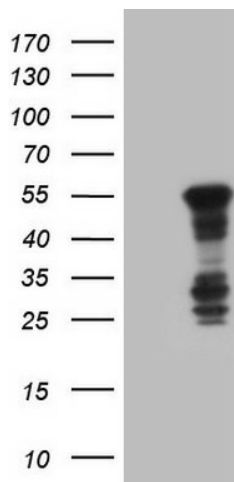
[View online »](#)

Synonyms: BHLHB3; DEC2; hDEC2; SHARP1

Protein Families: Transcription Factors

Protein Pathways: Circadian rhythm - mammal

Product images:



HEK293T cells were transfected with the pCMV6-ENTRY control (Left lane) or pCMV6-ENTRY BHLHE41 ([RC206882], Right lane) cDNA for 48 hrs and lysed. Equivalent amounts of cell lysates (5 ug per lane) were separated by SDS-PAGE and immunoblotted with anti-BHLHE41. Positive lysates [LY410724] (100ug) and [LC410724] (20ug) can be purchased separately from OriGene.