

## Product datasheet for **TA806252M**

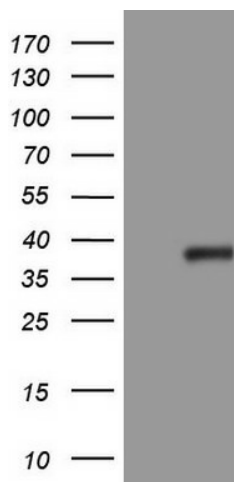
### Cyclin D2 (CCND2) Mouse Monoclonal Antibody [Clone ID: OTI1E4]

#### Product data:

|                       |  |
|-----------------------|--|
| Product Type:         | Primary Antibodies   |
| Clone Name:           | OTI1E4   |
| Applications:         | WB   |
| Recommended Dilution: | WB 1:2000  |
| Reactivity:           | Human, Mouse, Rat  |
| Host:                 | Mouse  |
| Isotype:              | IgG2b  |
| Clonality:            | Monoclonal   |
| Immunogen:            | Full length human recombinant protein of human CCND2 (NP_001750) produced in E.coli.   |
| Formulation:          | PBS (pH 7.3) containing 1% BSA, 50% glycerol and 0.02% sodium azide.   |
| Concentration:        | 1 mg/ml  |
| Purification:         | Purified from mouse ascites fluids or tissue culture supernatant by affinity chromatography (protein A/G)  |
| Conjugation:          | Unconjugated   |
| Storage:              | Store at -20°C as received.  |
| Stability:            | Stable for 12 months from date of receipt.   |
| Gene Name:            | cyclin D2  |
| Database Link:        | <a href="#">NP_001750</a><br><a href="#">Entrez Gene 12444 Mouse</a> <a href="#">Entrez Gene 64033 Rat</a> <a href="#">Entrez Gene 894 Human</a><br><a href="#">P30279</a> |
| Synonyms:             | KIAK0002; MPPH3  |
| Protein Families:     | Druggable Genome   |
| Protein Pathways:     | Cell cycle, Focal adhesion, Jak-STAT signaling pathway, p53 signaling pathway, Wnt signaling pathway   |


[View online »](#)

## Product images:



HEK293T cells were transfected with the pCMV6-ENTRY control (Left lane) or pCMV6-ENTRY CCND2 ([RC210316], Right lane) cDNA for 48 hrs and lysed. Equivalent amounts of cell lysates (5 ug per lane) were separated by SDS-PAGE and immunoblotted with anti-CCND2. Positive lysates [LY419750] (100ug) and [LC419750] (20ug) can be purchased separately from OriGene.