

Product datasheet for **TA806252AM**

Cyclin D2 (CCND2) Mouse Monoclonal Antibody (Biotin conjugated) [Clone ID: OTI1E4]

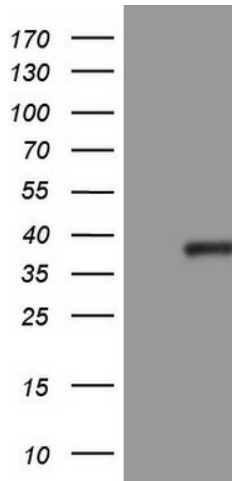
Product data:

Product Type:	Primary Antibodies
Clone Name:	OTI1E4
Applications:	WB
Recommended Dilution:	WB 1:2000
Reactivity:	Human, Mouse, Rat
Host:	Mouse
Isotype:	IgG2b
Clonality:	Monoclonal
Immunogen:	Full length human recombinant protein of human CCND2 (NP_001750) produced in E.coli.
Formulation:	PBS (pH 7.3) containing 1% BSA, 50% glycerol and 0.02% sodium azide.
Concentration:	0.5 mg/ml
Purification:	Purified from mouse ascites fluids or tissue culture supernatant by affinity chromatography (protein A/G)
Conjugation:	Biotin
Storage:	Store at -20°C as received.
Stability:	Stable for 12 months from date of receipt.
Gene Name:	cyclin D2
Database Link:	NP_001750 Entrez Gene 12444 Mouse Entrez Gene 64033 Rat Entrez Gene 894 Human P30279
Synonyms:	KIAK0002; MPPH3
Protein Families:	Druggable Genome
Protein Pathways:	Cell cycle, Focal adhesion, Jak-STAT signaling pathway, p53 signaling pathway, Wnt signaling pathway



[View online »](#)

Product images:



HEK293T cells were transfected with the pCMV6-ENTRY control (Left lane) or pCMV6-ENTRY CCND2 ([RC210316], Right lane) cDNA for 48 hrs and lysed. Equivalent amounts of cell lysates (5 ug per lane) were separated by SDS-PAGE and immunoblotted with anti-CCND2. Positive lysates [LY419750] (100ug) and [LC419750] (20ug) can be purchased separately from OriGene.