

## Product datasheet for **TA806240S**

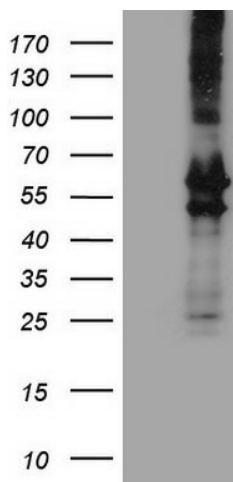
### Peripherin (PRPH) Mouse Monoclonal Antibody [Clone ID: OTI8G3]

#### Product data:

Product Type:	Primary Antibodies
Clone Name:	OTI8G3
Applications:	WB
Recommended Dilution:	WB 1:2000
Reactivity:	Human, Mouse, Rat
Host:	Mouse
Isotype:	IgG2a
Clonality:	Monoclonal
Immunogen:	Full length human recombinant protein of human PRPH (NP_006253) produced in HEK293T cell.
Formulation:	PBS (pH 7.3) containing 1% BSA, 50% glycerol and 0.02% sodium azide.
Concentration:	1 mg/ml
Purification:	Purified from mouse ascites fluids or tissue culture supernatant by affinity chromatography (protein A/G)
Conjugation:	Unconjugated
Storage:	Store at -20°C as received.
Stability:	Stable for 12 months from date of receipt.
Gene Name:	peripherin
Database Link:	<a href="#">NP_006253</a> <a href="#">Entrez Gene 19132 Mouse</a> <a href="#">Entrez Gene 24688 Rat</a> <a href="#">Entrez Gene 5630 Human</a> <a href="#">P41219</a>
Synonyms:	NEF4; PRPH1
Protein Pathways:	Amyotrophic lateral sclerosis (ALS)



[View online »](#)

**Product images:**

HEK293T cells were transfected with the pCMV6-ENTRY control (Left lane) or pCMV6-ENTRY PRPH ([RC207561], Right lane) cDNA for 48 hrs and lysed. Equivalent amounts of cell lysates (5 ug per lane) were separated by SDS-PAGE and immunoblotted with anti-PRPH. Positive lysates [LY401885] (100ug) and [LC401885] (20ug) can be purchased separately from OriGene.