

## Product datasheet for **TA806231S**

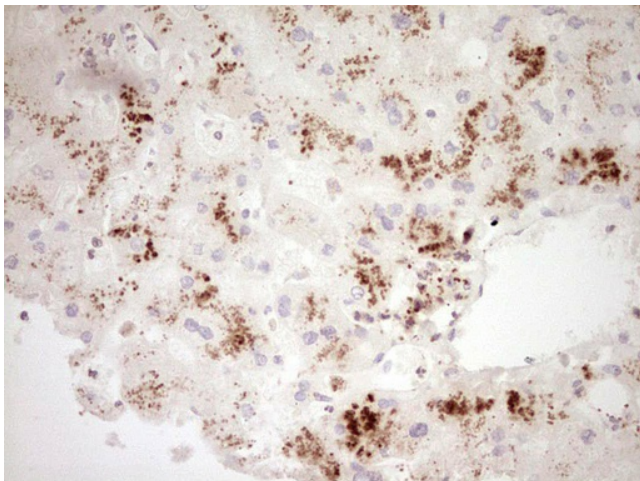
### GLI4 Mouse Monoclonal Antibody [Clone ID: OTI2E8]

#### Product data:

Product Type:	Primary Antibodies
Clone Name:	OTI2E8
Applications:	IHC
Recommended Dilution:	IHC 1:150
Reactivity:	Human
Host:	Mouse
Isotype:	IgG2a
Clonality:	Monoclonal
Immunogen:	Full length human recombinant protein of human GLI4 (NP_612474) produced in E.coli.
Formulation:	PBS (pH 7.3) containing 1% BSA, 50% glycerol and 0.02% sodium azide.
Concentration:	1 mg/ml
Purification:	Purified from mouse ascites fluids or tissue culture supernatant by affinity chromatography (protein A/G)
Conjugation:	Unconjugated
Storage:	Store at -20°C as received.
Stability:	Stable for 12 months from date of receipt.
Predicted Protein Size:	41 kDa
Gene Name:	GLI family zinc finger 4
Database Link:	<a href="#">NP_612474</a> <a href="#">Entrez Gene 2738 Human</a> <a href="#">P10075</a>
Synonyms:	HKR4; ZNF928



[View online »](#)

**Product images:**

Immunohistochemical staining of paraffin-embedded Human liver tissue within the normal limits using anti-GLI4 mouse monoclonal antibody. Heat-induced epitope retrieval by EDTA solution buffer pH 8.0 at 120°C for 3 min.