

## Product datasheet for **TA806226M**

### Peripherin (PRPH) Mouse Monoclonal Antibody [Clone ID: OTI7E4]

#### Product data:

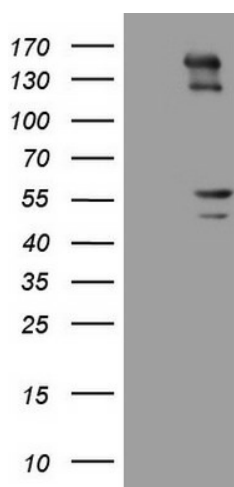
|                         |   |
|-------------------------|---|
| Product Type:           | Primary Antibodies  |
| Clone Name:             | OTI7E4  |
| Applications:           | WB  |
| Recommended Dilution:   | WB 1:2000   |
| Reactivity:             | Human, Mouse, Rat   |
| Host:                   | Mouse   |
| Isotype:                | IgG2b   |
| Clonality:              | Monoclonal  |
| Immunogen:              | Full length human recombinant protein of human PRPH (NP_006253) produced in HEK293T cell.   |
| Formulation:            | PBS (pH 7.3) containing 1% BSA, 50% glycerol and 0.02% sodium azide.  |
| Concentration:          | 1 mg/ml   |
| Purification:           | Purified from mouse ascites fluids or tissue culture supernatant by affinity chromatography (protein A/G)   |
| Conjugation:            | Unconjugated  |
| Storage:                | Store at -20°C as received.   |
| Stability:              | Stable for 12 months from date of receipt.  |
| Predicted Protein Size: | 53.5 kDa  |
| Gene Name:              | peripherin  |
| Database Link:          | <a href="#">NP_006253</a><br><a href="#">Entrez Gene 19132 Mouse</a> <a href="#">Entrez Gene 24688 Rat</a> <a href="#">Entrez Gene 5630 Human</a><br><a href="#">P41219</a>   |
| Background:             | This gene encodes a cytoskeletal protein found in neurons of the peripheral nervous system. The encoded protein is a type III intermediate filament protein with homology to other cytoskeletal proteins such as desmin, and is a different protein that the peripherin found in photoreceptors. Mutations in this gene have been associated with susceptibility to amyotrophic lateral sclerosis. [provided by RefSeq, Jul 2008] |


[View online »](#)

**Synonyms:** NEF4; PRPH1

**Protein Pathways:** Amyotrophic lateral sclerosis (ALS)

**Product images:**



HEK293T cells were transfected with the pCMV6-ENTRY control (Left lane) or pCMV6-ENTRY PRPH ([RC207561], Right lane) cDNA for 48 hrs and lysed. Equivalent amounts of cell lysates (5 ug per lane) were separated by SDS-PAGE and immunoblotted with anti-PRPH ([TA806226]). Positive lysates [LY401885] (100ug) and [LC401885] (20ug) can be purchased separately from OriGene.