

Product datasheet for **TA806226AM**

Peripherin (PRPH) Mouse Monoclonal Antibody (Biotin conjugated) [Clone ID: OTI7E4]

Product data:

Product Type:	Primary Antibodies
Clone Name:	OTI7E4
Applications:	WB
Recommended Dilution:	WB 1:2000
Reactivity:	Human, Mouse, Rat
Host:	Mouse
Isotype:	IgG2b
Clonality:	Monoclonal
Immunogen:	Full length human recombinant protein of human PRPH (NP_006253) produced in HEK293T cell.
Formulation:	PBS (pH 7.3) containing 1% BSA, 50% glycerol and 0.02% sodium azide.
Concentration:	0.5 mg/ml
Purification:	Purified from mouse ascites fluids or tissue culture supernatant by affinity chromatography (protein A/G)
Conjugation:	Biotin
Storage:	Store at -20°C as received.
Stability:	Stable for 12 months from date of receipt.
Predicted Protein Size:	53.5 kDa
Gene Name:	peripherin
Database Link:	NP_006253 Entrez Gene 19132 Mouse Entrez Gene 24688 Rat Entrez Gene 5630 Human P41219
Background:	This gene encodes a cytoskeletal protein found in neurons of the peripheral nervous system. The encoded protein is a type III intermediate filament protein with homology to other cytoskeletal proteins such as desmin, and is a different protein that the peripherin found in photoreceptors. Mutations in this gene have been associated with susceptibility to amyotrophic lateral sclerosis. [provided by RefSeq, Jul 2008]

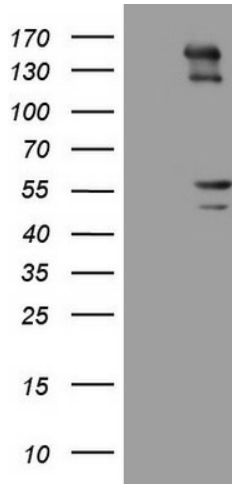


[View online »](#)

Synonyms: NEF4; PRPH1

Protein Pathways: Amyotrophic lateral sclerosis (ALS)

Product images:



HEK293T cells were transfected with the pCMV6-ENTRY control (Left lane) or pCMV6-ENTRY PRPH ([RC207561], Right lane) cDNA for 48 hrs and lysed. Equivalent amounts of cell lysates (5 ug per lane) were separated by SDS-PAGE and immunoblotted with anti-PRPH ([TA806226]). Positive lysates [LY401885] (100ug) and [LC401885] (20ug) can be purchased separately from OriGene.