

## Product datasheet for **TA806218BM**

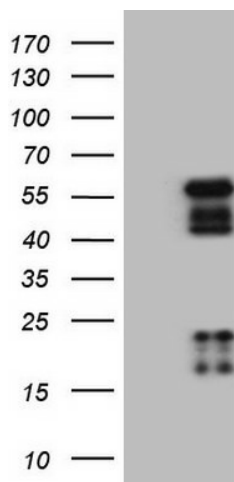
### NR2E3 Mouse Monoclonal Antibody (HRP conjugated) [Clone ID: OTI3G3]

#### Product data:

|                       |  |
|-----------------------|--|
| Product Type:         | Primary Antibodies   |
| Clone Name:           | OTI3G3   |
| Applications:         | WB   |
| Recommended Dilution: | WB 1:2000  |
| Reactivity:           | Human, Mouse, Rat  |
| Host:                 | Mouse  |
| Isotype:              | IgG1   |
| Clonality:            | Monoclonal   |
| Immunogen:            | Full length human recombinant protein of human NR2E3 (NP_057430) produced in HEK293T cell.   |
| Formulation:          | PBS (pH 7.3) containing 1% BSA, 50% glycerol.  |
| Concentration:        | 0.5 mg/ml  |
| Purification:         | Purified from mouse ascites fluids or tissue culture supernatant by affinity chromatography (protein A/G)  |
| Conjugation:          | HRP  |
| Storage:              | Store at -20°C as received.  |
| Stability:            | Stable for 12 months from date of receipt.   |
| Gene Name:            | nuclear receptor subfamily 2 group E member 3  |
| Database Link:        | <a href="#">NP_057430</a><br><a href="#">Entrez Gene 23958 Mouse</a> <a href="#">Entrez Gene 100365683 Rat</a> <a href="#">Entrez Gene 10002 Human</a><br><a href="#">Q9Y5X4</a> |
| Synonyms:             | ESCS; PNR; rd7; RNR; RP37  |
| Protein Families:     | Druggable Genome, Nuclear Hormone Receptor, Transcription Factors  |



[View online »](#)

**Product images:**

HEK293T cells were transfected with the pCMV6-ENTRY control (Left lane) or pCMV6-ENTRY NR2E3 ([RC220677], Right lane) cDNA for 48 hrs and lysed. Equivalent amounts of cell lysates (5 ug per lane) were separated by SDS-PAGE and immunoblotted with anti-NR2E3. Positive lysates [LY429495] (100ug) and [LC429495] (20ug) can be purchased separately from OriGene.