

## Product datasheet for **TA806218**

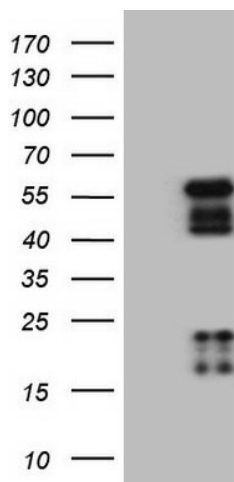
### NR2E3 Mouse Monoclonal Antibody [Clone ID: OTI3G3]

#### Product data:

Product Type:	Primary Antibodies
Clone Name:	OTI3G3
Applications:	WB
Recommended Dilution:	WB 1:2000
Reactivity:	Human, Mouse, Rat
Host:	Mouse
Isotype:	IgG1
Clonality:	Monoclonal
Immunogen:	Full length human recombinant protein of human NR2E3 (NP_057430) produced in HEK293T cell.
Formulation:	PBS (pH 7.3) containing 1% BSA, 50% glycerol and 0.02% sodium azide.
Concentration:	1 mg/ml
Purification:	Purified from mouse ascites fluids or tissue culture supernatant by affinity chromatography (protein A/G)
Conjugation:	Unconjugated
Storage:	Store at -20°C as received.
Stability:	Stable for 12 months from date of receipt.
Gene Name:	nuclear receptor subfamily 2 group E member 3
Database Link:	<a href="#">NP_057430</a> <a href="#">Entrez Gene 23958 Mouse</a> <a href="#">Entrez Gene 100365683 Rat</a> <a href="#">Entrez Gene 10002 Human Q9Y5X4</a>
Synonyms:	ESCS; PNR; rd7; RNR; RP37
Protein Families:	Druggable Genome, Nuclear Hormone Receptor, Transcription Factors



[View online »](#)

**Product images:**

HEK293T cells were transfected with the pCMV6-ENTRY control (Left lane) or pCMV6-ENTRY NR2E3 ([RC220677], Right lane) cDNA for 48 hrs and lysed. Equivalent amounts of cell lysates (5 ug per lane) were separated by SDS-PAGE and immunoblotted with anti-NR2E3. Positive lysates [LY429495] (100ug) and [LC429495] (20ug) can be purchased separately from OriGene.