

## Product datasheet for **TA806213AM**

### Angiopoietin 2 (ANGPT2) Mouse Monoclonal Antibody (Biotin conjugated) [Clone ID: OTI3H7]

#### Product data:

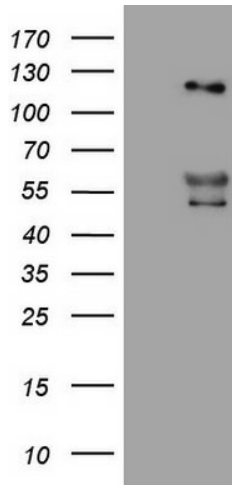
Product Type:	Primary Antibodies
Clone Name:	OTI3H7
Applications:	IHC, WB
Recommended Dilution:	WB 1:500, IHC 1:150
Reactivity:	Human, Mouse, Rat
Host:	Mouse
Isotype:	IgG1
Clonality:	Monoclonal
Immunogen:	Human recombinant protein fragment corresponding to amino acids 19-496 of human ANGPT2(NP_001138) produced in E.coli.
Formulation:	PBS (pH 7.3) containing 1% BSA, 50% glycerol and 0.02% sodium azide.
Concentration:	0.5 mg/ml
Purification:	Purified from mouse ascites fluids or tissue culture supernatant by affinity chromatography (protein A/G)
Conjugation:	Biotin
Storage:	Store at -20°C as received.
Stability:	Stable for 12 months from date of receipt.
Predicted Protein Size:	54.9 kDa
Gene Name:	angiopoietin 2
Database Link:	<a href="#">NP_001138</a> <a href="#">Entrez Gene 11601 Mouse</a> <a href="#">Entrez Gene 89805 Rat</a> <a href="#">Entrez Gene 285 Human</a> <a href="#">O15123</a>
Background:	The protein encoded by this gene is an antagonist of angiopoietin 1 (ANGPT1) and endothelial TEK tyrosine kinase (TIE-2, TEK). The encoded protein disrupts the vascular remodeling ability of ANGPT1 and may induce endothelial cell apoptosis. Three transcript variants encoding three different isoforms have been found for this gene. [provided by RefSeq, Jul 2008]
Synonyms:	AGPT2; ANG2; LMPHM10



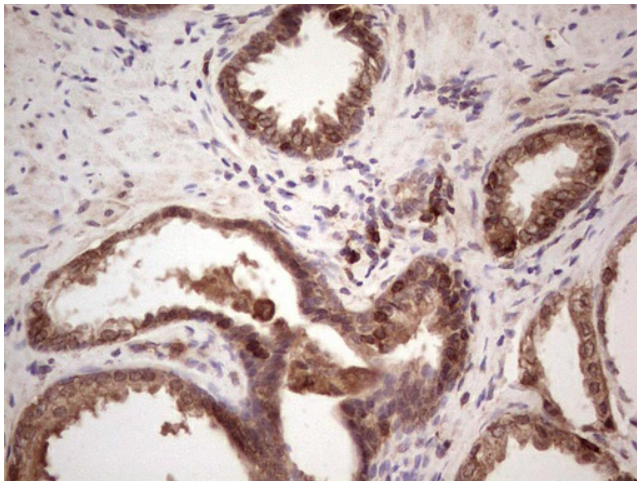
[View online »](#)

Protein Families: Druggable Genome, Secreted Protein

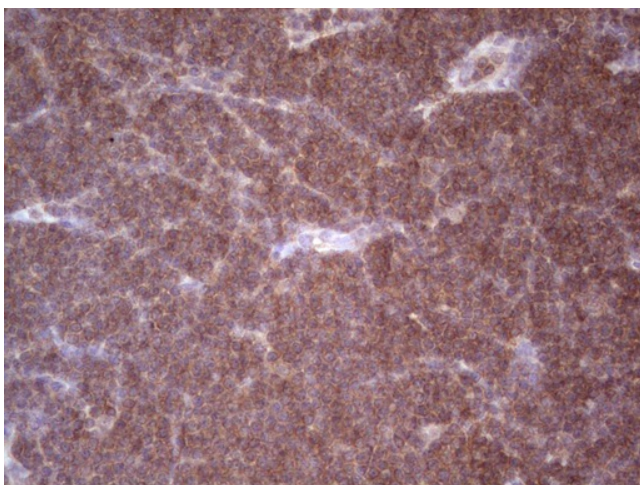
**Product images:**



HEK293T cells were transfected with the pCMV6-ENTRY control (Cat# [PS100001], Left lane) or pCMV6-ENTRY ANGPT2 (Cat# [RC217216], Right lane) cDNA for 48 hrs and lysed. Equivalent amounts of cell lysates (5 ug per lane) were separated by SDS-PAGE and immunoblotted with anti-ANGPT2(Cat# [TA806213]). Positive lysates [LY400459] (100ug) and [LC400459] (20ug) can be purchased separately from OriGene.



Immunohistochemical staining of paraffin-embedded Human prostate tissue within the normal limits using anti-ANGPT2 mouse monoclonal antibody. ([TA806213]; heat-induced epitope retrieval by 1mM EDTA in 10mM Tris, pH8.5, 120°C for 3min)



Immunohistochemical staining of paraffin-embedded Human lymphoma tissue using anti-ANGPT2 mouse monoclonal antibody. ([TA806213]; heat-induced epitope retrieval by 1mM EDTA in 10mM Tris, pH8.5, 120°C for 3min)