

## Product datasheet for **TA806203S**

### NR2E3 Mouse Monoclonal Antibody [Clone ID: OTI3D4]

#### Product data:

Product Type:	Primary Antibodies
Clone Name:	OTI3D4
Applications:	WB
Recommended Dilution:	WB 1:2000
Reactivity:	Human, Mouse, Rat
Host:	Mouse
Isotype:	IgG1
Clonality:	Monoclonal
Immunogen:	Full length human recombinant protein of human NR2E3 (NP_057430) produced in HEK293T cell.
Formulation:	PBS (pH 7.3) containing 1% BSA, 50% glycerol and 0.02% sodium azide.
Concentration:	1 mg/ml
Purification:	Purified from mouse ascites fluids or tissue culture supernatant by affinity chromatography (protein A/G)
Conjugation:	Unconjugated
Storage:	Store at -20°C as received.
Stability:	Stable for 12 months from date of receipt.
Predicted Protein Size:	39.5 kDa
Gene Name:	nuclear receptor subfamily 2 group E member 3
Database Link:	<a href="#">NP_057430</a> <a href="#">Entrez Gene 23958 Mouse</a> <a href="#">Entrez Gene 100365683 Rat</a> <a href="#">Entrez Gene 10002 Human</a> <a href="#">Q9Y5X4</a>



[View online »](#)

**Background:**

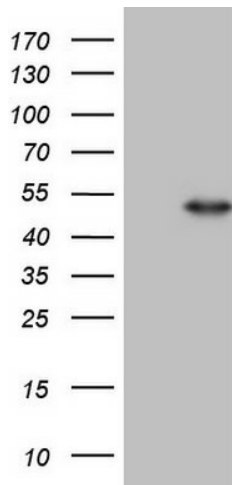
This protein is part of a large family of nuclear receptor transcription factors involved in signaling pathways. Nuclear receptors have been shown to regulate pathways involved in embryonic development, as well as in maintenance of proper cell function in adults. Members of this family are characterized by discrete domains that function in DNA and ligand binding. This gene encodes a retinal nuclear receptor that is a ligand-dependent transcription factor. Defects in this gene are a cause of enhanced S cone syndrome. Alternatively spliced transcript variants encoding different isoforms have been identified. [provided by RefSeq, Jul

**Synonyms:**

ESCS; PNR; rd7; RNR; RP37

**Protein Families:**

Druggable Genome, Nuclear Hormone Receptor, Transcription Factors

**Product images:**

HEK293T cells were transfected with the pCMV6-ENTRY control (Cat# [PS100001], Left lane) or pCMV6-ENTRY NR2E3 (Cat# [RC220677], Right lane) cDNA for 48 hrs and lysed. Equivalent amounts of cell lysates (5 ug per lane) were separated by SDS-PAGE and immunoblotted with anti-NR2E3 (Cat# [TA806203]). Positive lysates [LY429495] (100ug) and [LC429495] (20ug) can be purchased separately from OriGene.