

## Product datasheet for **TA806202AM**

### **ErbB 3 (ERBB3) Mouse Monoclonal Antibody (Biotin conjugated) [Clone ID: OTI1F1]**

#### **Product data:**

Product Type:	Primary Antibodies
Clone Name:	OTI1F1
Applications:	FC, WB
Recommended Dilution:	FLOW 1:100
Reactivity:	Human, Mouse, Rat
Host:	Mouse
Isotype:	IgG2b
Clonality:	Monoclonal
Immunogen:	Full length human recombinant protein of human ERBB3 (NP_001973) produced in SF9 cell.
Formulation:	PBS (pH 7.3) containing 1% BSA, 50% glycerol and 0.02% sodium azide.
Concentration:	0.5 mg/ml
Purification:	Purified from mouse ascites fluids or tissue culture supernatant by affinity chromatography (protein A/G)
Conjugation:	Biotin
Storage:	Store at -20°C as received.
Stability:	Stable for 12 months from date of receipt.
Predicted Protein Size:	146 kDa
Gene Name:	erb-b2 receptor tyrosine kinase 3
Database Link:	<a href="#">NP_001973</a> <a href="#">Entrez Gene 13867 Mouse</a> <a href="#">Entrez Gene 29496 Rat</a> <a href="#">Entrez Gene 2065 Human</a> <a href="#">P21860</a>



[View online »](#)

**Background:**

This gene encodes a member of the epidermal growth factor receptor (EGFR) family of receptor tyrosine kinases. This membrane-bound protein has a neuregulin binding domain but not an active kinase domain. It therefore can bind this ligand but not convey the signal into the cell through protein phosphorylation. However, it does form heterodimers with other EGF receptor family members which do have kinase activity. Heterodimerization leads to the activation of pathways which lead to cell proliferation or differentiation. Amplification of this gene and/or overexpression of its protein have been reported in numerous cancers, including prostate, bladder, and breast tumors. Alternate transcriptional splice variants encoding different isoforms have been characterized. One isoform lacks the intermembrane region and is secreted outside the cell. This form acts to modulate the activity of the membrane-bound form. Additional splice variants have also been reported, but they have not been thoroughly characterized. [provided by RefSeq, Jul 2008]

**Synonyms:**

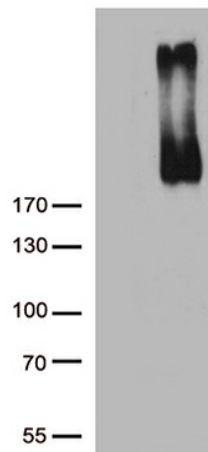
c-erbB-3; c-erbB3; ErbB-3; erbB3-S; HER3; LCCS2; MDA-BF-1; p45-sErbB3; p85-sErbB3; p180-ErbB3

**Protein Families:**

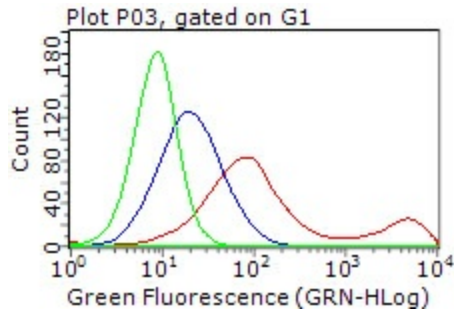
Adult stem cells, Druggable Genome, Protein Kinase, Secreted Protein, Stem cell - Pluripotency, Transmembrane

**Protein Pathways:**

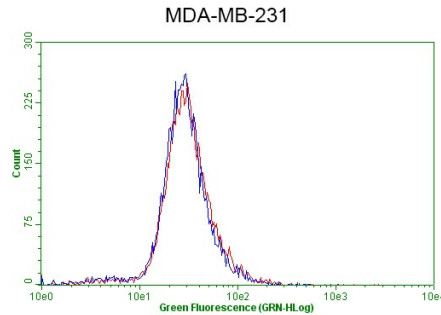
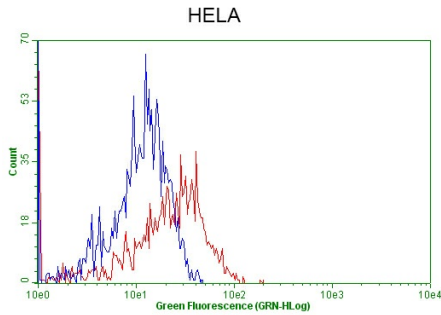
Calcium signaling pathway, Endocytosis, ErbB signaling pathway

**Product images:**

HEK293T cells were transfected with the pCMV6-ENTRY control (Left lane) or pCMV6-ENTRY ERBB3 ([RC209954], Right lane) cDNA for 48 hrs and lysed. Equivalent amounts of cell lysates were separated by SDS-PAGE and immunoblotted with anti-ERBB3. (1:500). Positive lysates [LY400725] (100ug) and [LC400725] (20ug) can be purchased separately from OriGene.



HEK293T cells transfected with either [RC209954] overexpress plasmid (Red), compared to an IgG isotype control, (Green) or empty vector control plasmid (Blue) were immunostained by anti-ERBB3 antibody ([TA806202]), and then analyzed by flow cytometry (1:100).



Flow cytometric Analysis of Hela cells, using anti-ERBB3 antibody ([TA806202]), (Red), compared to a nonspecific negative control antibody (TA50011), (Blue). The right is MDA-MB-231 cells as negative control (1:100).