

## Product datasheet for **TA806197AM**

### Glucocorticoid Receptor (NR3C1) Mouse Monoclonal Antibody (Biotin conjugated) [Clone ID: OTI1B11]

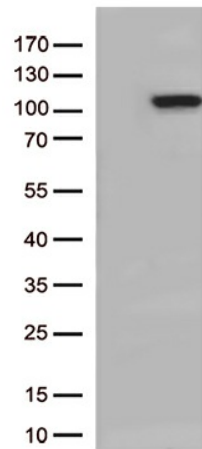
#### Product data:

Product Type:	Primary Antibodies
Clone Name:	OTI1B11
Applications:	IHC, WB
Recommended Dilution:	WB 1:2000
Reactivity:	Human, Mouse, Rat
Host:	Mouse
Isotype:	IgG1
Clonality:	Monoclonal
Immunogen:	Human recombinant protein fragment corresponding to amino acids 1-265 of human NR3C1(NP_000167) produced in E.coli.
Formulation:	PBS (pH 7.3) containing 1% BSA, 50% glycerol and 0.02% sodium azide.
Concentration:	0.5 mg/ml
Purification:	Purified from mouse ascites fluids or tissue culture supernatant by affinity chromatography (protein A/G)
Conjugation:	Biotin
Storage:	Store at -20°C as received.
Stability:	Stable for 12 months from date of receipt.
Gene Name:	nuclear receptor subfamily 3 group C member 1
Database Link:	<a href="#">NP_000167</a> <a href="#">Entrez Gene 14815 Mouse</a> <a href="#">Entrez Gene 24413 Rat</a> <a href="#">Entrez Gene 2908 Human P04150</a>
Synonyms:	GCCR; GCR; GCRST; GR; GRL
Protein Families:	Druggable Genome, Nuclear Hormone Receptor, Transcription Factors
Protein Pathways:	Neuroactive ligand-receptor interaction

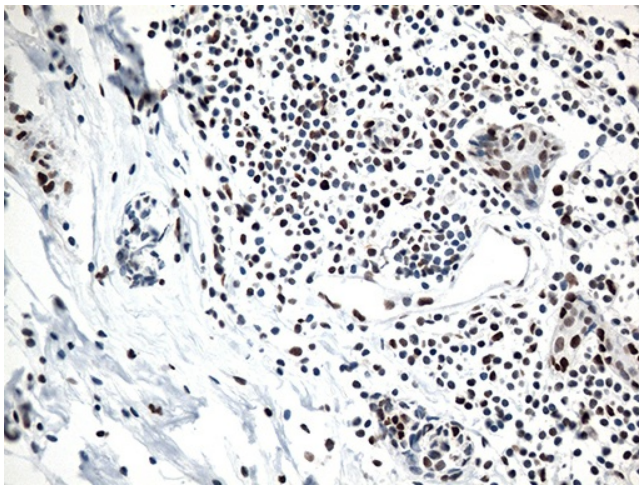


[View online »](#)

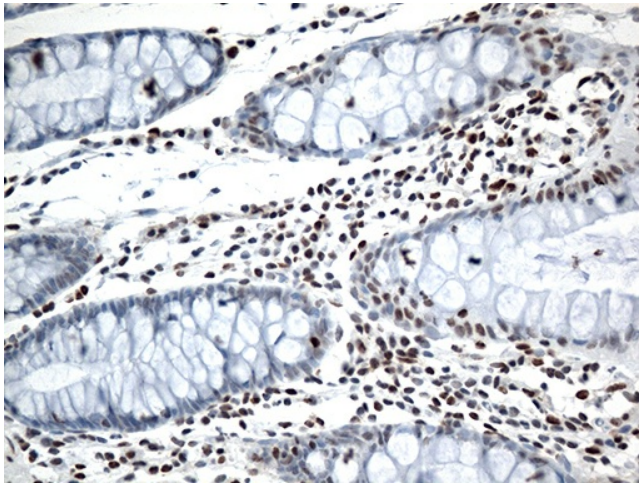
**Product images:**



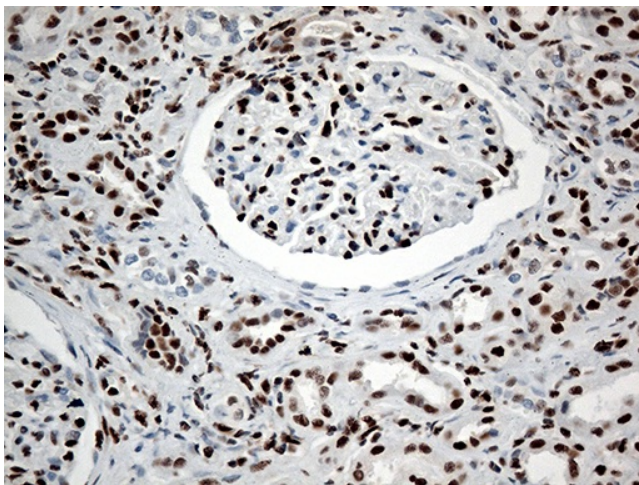
HEK293T cells were transfected with the pCMV6-ENTRY control (Cat# [PS100001], Left lane) or pCMV6-ENTRY NR3C1 (Cat# [RC220189], Right lane) cDNA for 48 hrs and lysed. Equivalent amounts of cell lysates (5 ug per lane) were separated by SDS-PAGE and immunoblotted with anti-NR3C1 (Cat# [TA806197])(1:500).



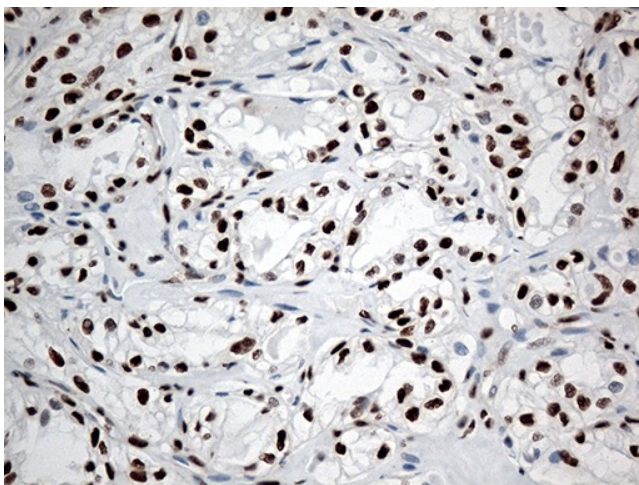
Immunohistochemical staining of paraffin-embedded Adenocarcinoma of Human breast tissue using anti-NR3C1 mouse monoclonal antibody. (Heat-induced epitope retrieval by 1mM EDTA in 10mM Tris buffer (pH8.5) at 120°C for 3min, [TA806197]) (1:500)



Immunohistochemical staining of paraffin-embedded Human colon tissue within the normal limits using anti-NR3C1 mouse monoclonal antibody. (Heat-induced epitope retrieval by 1mM EDTA in 10mM Tris buffer (pH8.5) at 120°C for 3min, [TA806197]) (1:500)

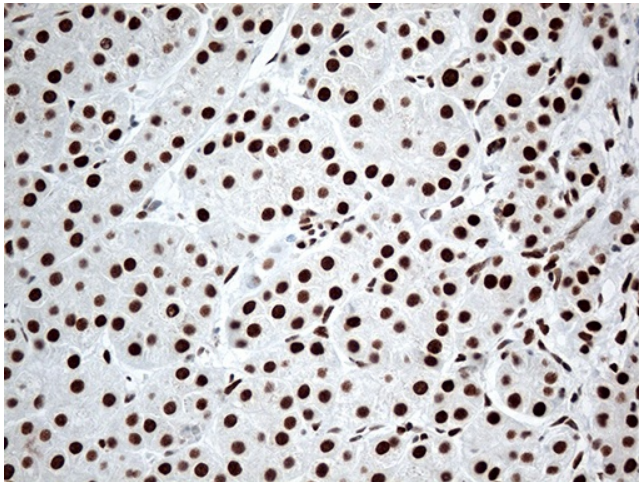


Immunohistochemical staining of paraffin-embedded Human Kidney tissue within the normal limits using anti-NR3C1 mouse monoclonal antibody. (Heat-induced epitope retrieval by 10mM citric buffer, pH6.0, 120°C for 3min, [TA806197]) (1:500)

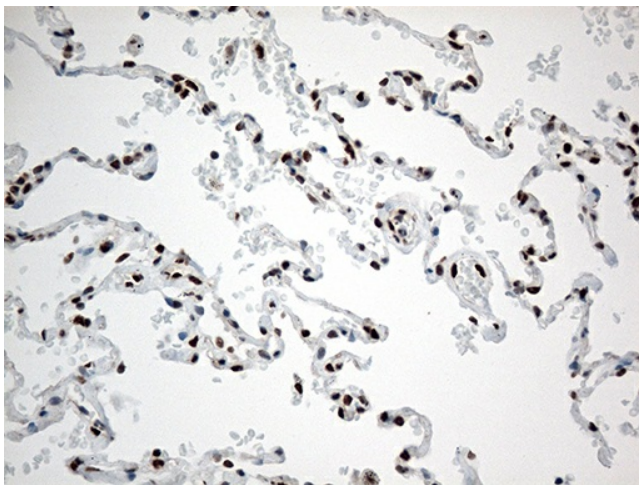


Immunohistochemical staining of paraffin-embedded Carcinoma of Human kidney tissue using anti-NR3C1 mouse monoclonal antibody. (Heat-induced epitope retrieval by 1mM EDTA in 10mM Tris buffer (pH8.5) at 120°C for 3min, [TA806197]) (1:500)

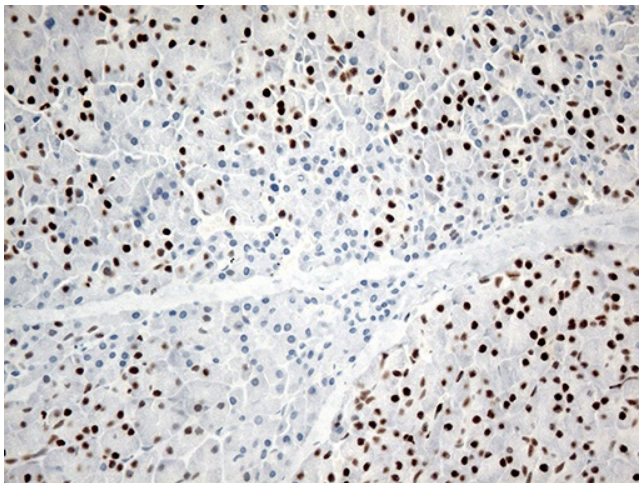




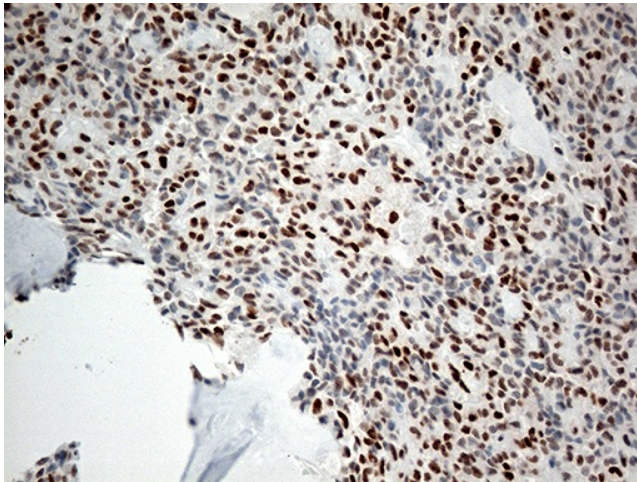
Immunohistochemical staining of paraffin-embedded Carcinoma of Human liver tissue using anti-NR3C1 mouse monoclonal antibody. (Heat-induced epitope retrieval by 1mM EDTA in 10mM Tris buffer (pH8.5) at 120°C for 3min, [TA806197]) (1:500)



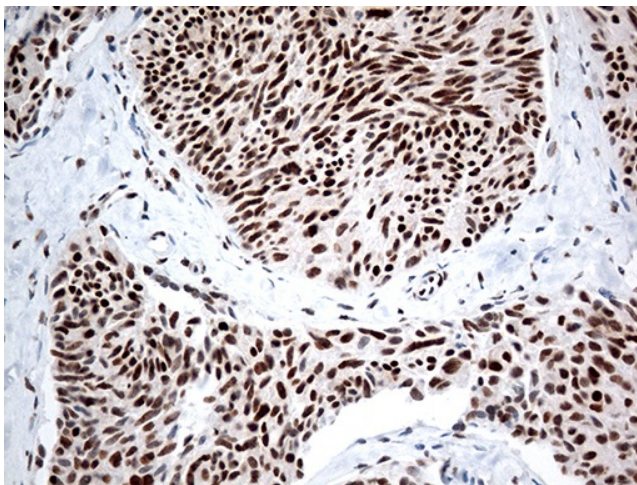
Immunohistochemical staining of paraffin-embedded Human lung tissue within the normal limits using anti-NR3C1 mouse monoclonal antibody. (Heat-induced epitope retrieval by 1mM EDTA in 10mM Tris buffer (pH8.5) at 120°C for 3min, [TA806197]) (1:500)



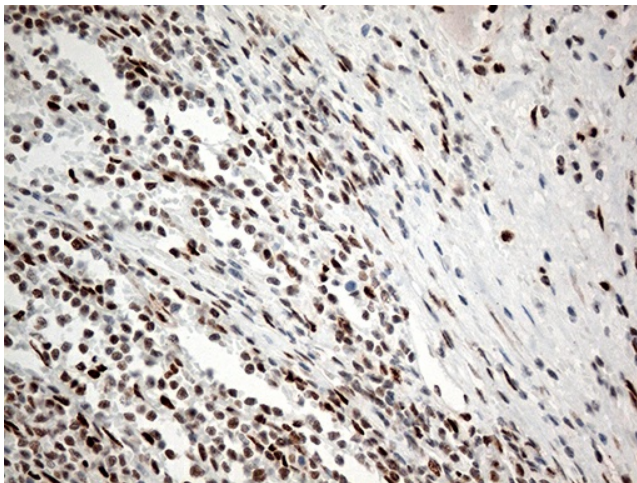
Immunohistochemical staining of paraffin-embedded Human pancreas tissue within the normal limits using anti-NR3C1 mouse monoclonal antibody. (Heat-induced epitope retrieval by 1mM EDTA in 10mM Tris buffer (pH8.5) at 120°C for 3min, [TA806197]) (1:500)



Immunohistochemical staining of paraffin-embedded Carcinoma of Human pancreas tissue using anti-NR3C1 mouse monoclonal antibody. (Heat-induced epitope retrieval by 1mM EDTA in 10mM Tris buffer (pH8.5) at 120°C for 3min, [TA806197]) (1:500)



Immunohistochemical staining of paraffin-embedded Carcinoma of Human thyroid tissue using anti-NR3C1 mouse monoclonal antibody. (Heat-induced epitope retrieval by 1mM EDTA in 10mM Tris buffer (pH8.5) at 120°C for 3min, [TA806197]) (1:500)



Immunohistochemical staining of paraffin-embedded Human lymphoma tissue using anti-NR3C1 mouse monoclonal antibody. (Heat-induced epitope retrieval by 1mM EDTA in 10mM Tris buffer (pH8.5) at 120°C for 3min, [TA806197]) (1:500)