

## Product datasheet for **TA806183S**

### Peripherin (PRPH) Mouse Monoclonal Antibody [Clone ID: OTI1E10]

#### Product data:

Product Type:	Primary Antibodies
Clone Name:	OTI1E10
Applications:	IHC, WB
Recommended Dilution:	WB 1:2000, IHC 1:150
Reactivity:	Human, Mouse, Rat
Host:	Mouse
Isotype:	IgG1
Clonality:	Monoclonal
Immunogen:	Full length human recombinant protein of human PRPH (NP_006253) produced in HEK293T cell.
Formulation:	PBS (pH 7.3) containing 1% BSA, 50% glycerol and 0.02% sodium azide.
Concentration:	1 mg/ml
Purification:	Purified from mouse ascites fluids or tissue culture supernatant by affinity chromatography (protein A/G)
Conjugation:	Unconjugated
Storage:	Store at -20°C as received.
Stability:	Stable for 12 months from date of receipt.
Predicted Protein Size:	53.5 kDa
Gene Name:	peripherin
Database Link:	<a href="#">NP_006253</a> <a href="#">Entrez Gene 19132 Mouse</a> <a href="#">Entrez Gene 24688 Rat</a> <a href="#">Entrez Gene 5630 Human</a> <a href="#">P41219</a>
Background:	This gene encodes a cytoskeletal protein found in neurons of the peripheral nervous system. The encoded protein is a type III intermediate filament protein with homology to other cytoskeletal proteins such as desmin, and is a different protein that the peripherin found in photoreceptors. Mutations in this gene have been associated with susceptibility to amyotrophic lateral sclerosis. [provided by RefSeq, Jul 2008]

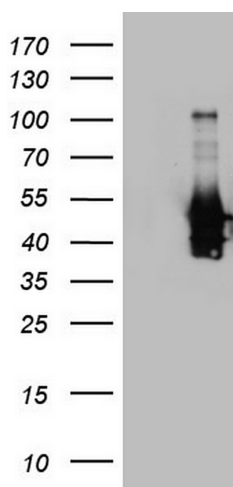


[View online »](#)

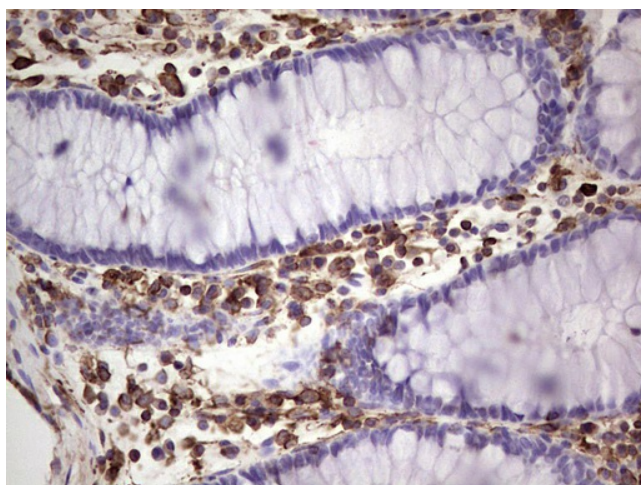
**Synonyms:** NEF4; PRPH1

**Protein Pathways:** Amyotrophic lateral sclerosis (ALS)

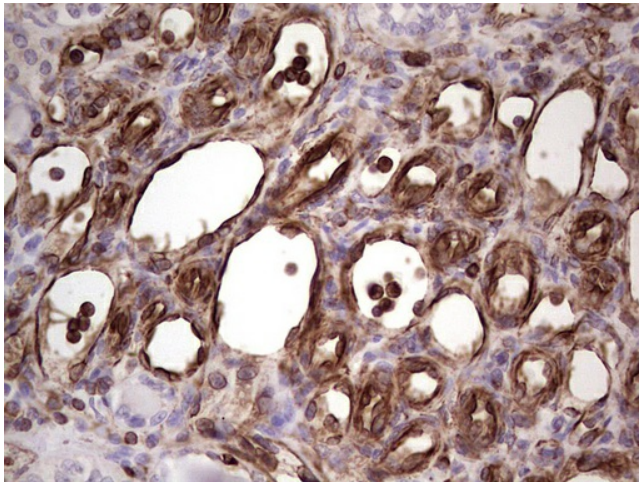
**Product images:**



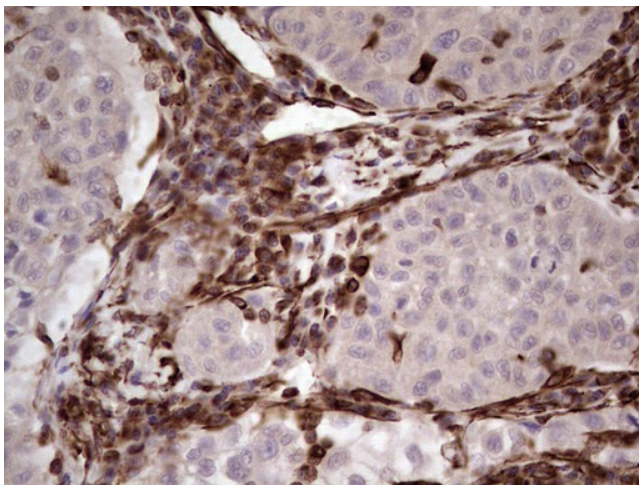
HEK293T cells were transfected with the pCMV6-ENTRY control (Cat# [PS100001], Left lane) or pCMV6-ENTRY PRPH (Cat# [RC207561], Right lane) cDNA for 48 hrs and lysed. Equivalent amounts of cell lysates (5 ug per lane) were separated by SDS-PAGE and immunoblotted with anti-PRPH (Cat# [TA806183]). Positive lysates [LY401885] (100ug) and [LC401885] (20ug) can be purchased separately from OriGene.



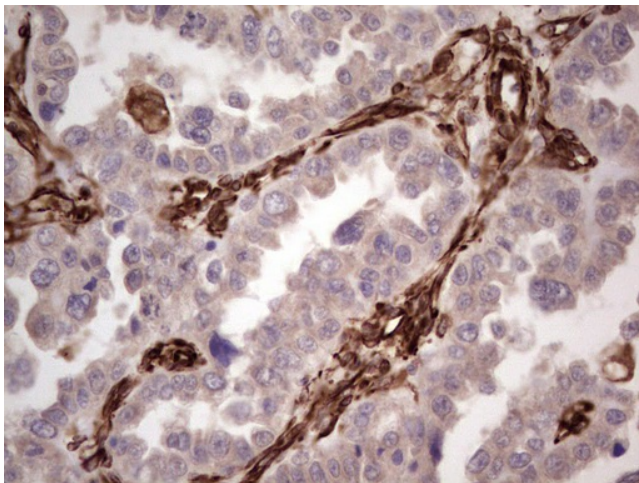
Immunohistochemical staining of paraffin-embedded Human colon tissue within the normal limits using anti-PRPH mouse monoclonal antibody. (Heat-induced epitope retrieval by 1mM EDTA in 10mM Tris, pH8.5, 120°C for 3min, [TA806183])



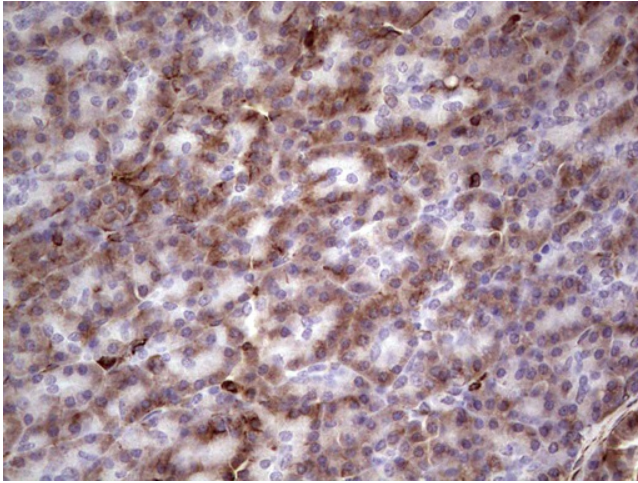
Immunohistochemical staining of paraffin-embedded Human Kidney tissue within the normal limits using anti-PRPH mouse monoclonal antibody. (Heat-induced epitope retrieval by 1mM EDTA in 10mM Tris, pH8.5, 120°C for 3min, [TA806183])



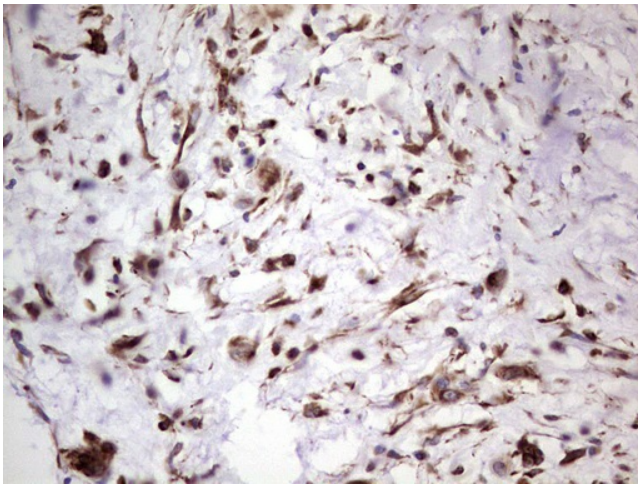
Immunohistochemical staining of paraffin-embedded Carcinoma of Human lung tissue using anti-PRPH mouse monoclonal antibody. (Heat-induced epitope retrieval by 1mM EDTA in 10mM Tris, pH8.5, 120°C for 3min, [TA806183])



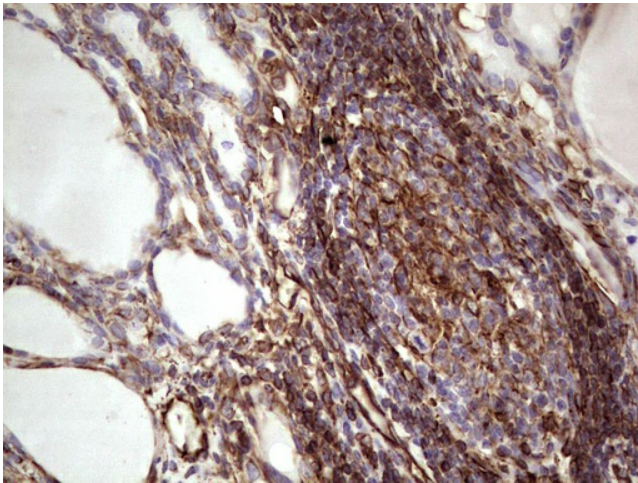
Immunohistochemical staining of paraffin-embedded Adenocarcinoma of Human ovary tissue using anti-PRPH mouse monoclonal antibody. (Heat-induced epitope retrieval by 1mM EDTA in 10mM Tris, pH8.5, 120°C for 3min, [TA806183])



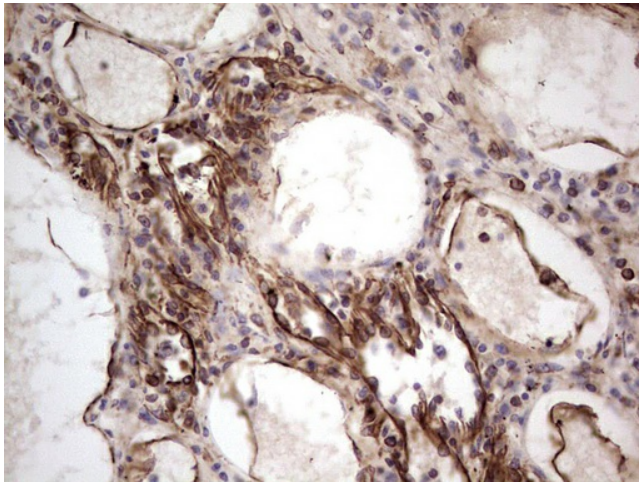
Immunohistochemical staining of paraffin-embedded Human pancreas tissue within the normal limits using anti-PRPH mouse monoclonal antibody. (Heat-induced epitope retrieval by 1mM EDTA in 10mM Tris, pH8.5, 120°C for 3min, [TA806183])



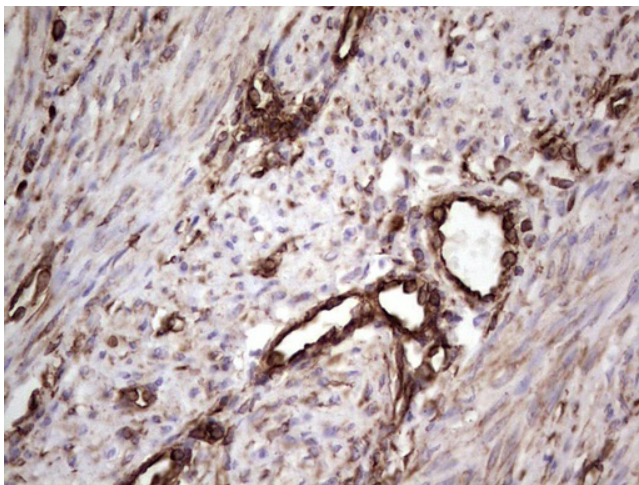
Immunohistochemical staining of paraffin-embedded Carcinoma of Human pancreas tissue using anti-PRPH mouse monoclonal antibody. (Heat-induced epitope retrieval by 1mM EDTA in 10mM Tris, pH8.5, 120°C for 3min, [TA806183])



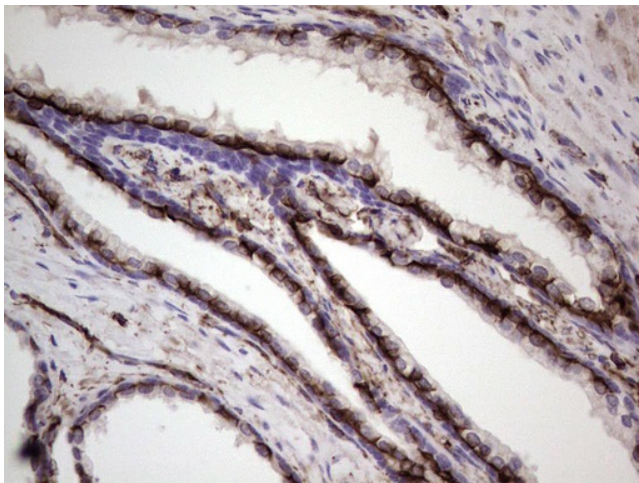
Immunohistochemical staining of paraffin-embedded Human thyroid tissue within the normal limits using anti-PRPH mouse monoclonal antibody. (Heat-induced epitope retrieval by 1mM EDTA in 10mM Tris, pH8.5, 120°C for 3min, [TA806183])



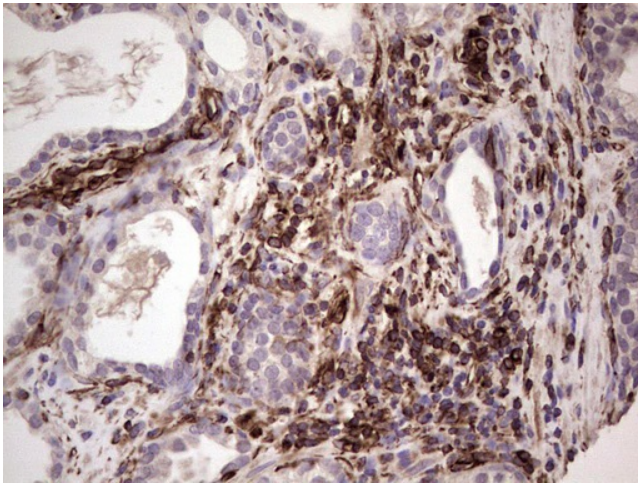
Immunohistochemical staining of paraffin-embedded Carcinoma of Human thyroid tissue using anti-PRPH mouse monoclonal antibody. (Heat-induced epitope retrieval by 1mM EDTA in 10mM Tris, pH8.5, 120°C for 3min, [TA806183])



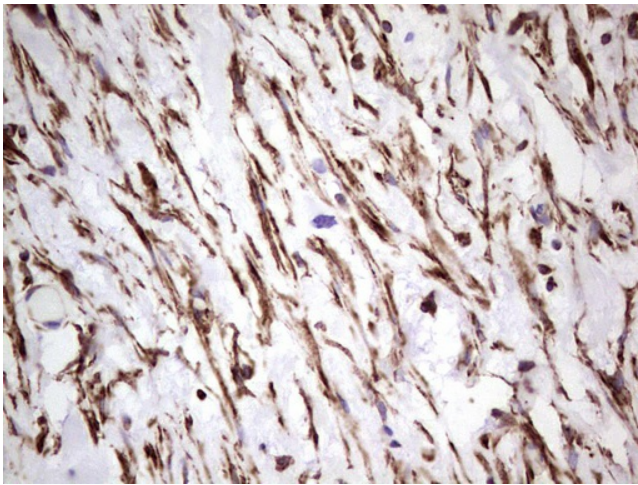
Immunohistochemical staining of paraffin-embedded Human endometrium tissue within the normal limits using anti-PRPH mouse monoclonal antibody. (Heat-induced epitope retrieval by 1mM EDTA in 10mM Tris, pH8.5, 120°C for 3min, [TA806183])



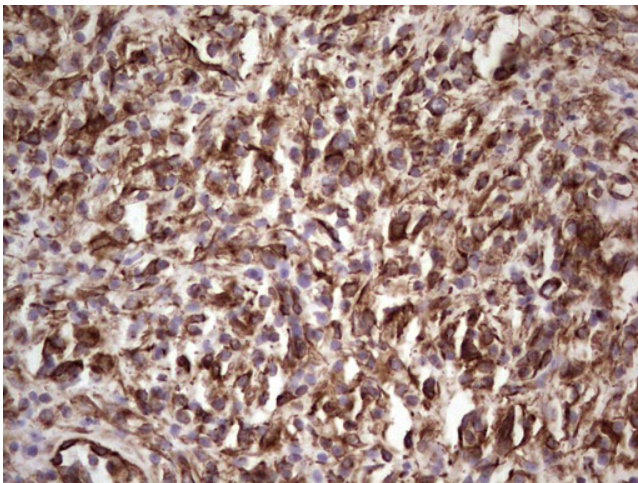
Immunohistochemical staining of paraffin-embedded Human prostate tissue within the normal limits using anti-PRPH mouse monoclonal antibody. (Heat-induced epitope retrieval by 1mM EDTA in 10mM Tris, pH8.5, 120°C for 3min, [TA806183])



Immunohistochemical staining of paraffin-embedded Carcinoma of Human prostate tissue using anti-PRPH mouse monoclonal antibody. (Heat-induced epitope retrieval by 1mM EDTA in 10mM Tris, pH8.5, 120°C for 3min, [TA806183])



Immunohistochemical staining of paraffin-embedded Carcinoma of Human bladder tissue using anti-PRPH mouse monoclonal antibody. (Heat-induced epitope retrieval by 1mM EDTA in 10mM Tris, pH8.5, 120°C for 3min, [TA806183])



Immunohistochemical staining of paraffin-embedded Human lymph node tissue within the normal limits using anti-PRPH mouse monoclonal antibody. (Heat-induced epitope retrieval by 1mM EDTA in 10mM Tris, pH8.5, 120°C for 3min, [TA806183])