

## Product datasheet for **TA806181AM**

### Peripherin (PRPH) Mouse Monoclonal Antibody (Biotin conjugated) [Clone ID: OTI3F4]

#### Product data:

Product Type:	Primary Antibodies
Clone Name:	OTI3F4
Applications:	IHC
Recommended Dilution:	IHC 1:150
Reactivity:	Human, Mouse, Rat
Host:	Mouse
Isotype:	IgG1
Clonality:	Monoclonal
Immunogen:	Full length human recombinant protein of human PRPH (NP_006253) produced in HEK293T cell.
Formulation:	PBS (pH 7.3) containing 1% BSA, 50% glycerol and 0.02% sodium azide.
Concentration:	0.5 mg/ml
Purification:	Purified from mouse ascites fluids or tissue culture supernatant by affinity chromatography (protein A/G)
Conjugation:	Biotin
Storage:	Store at -20°C as received.
Stability:	Stable for 12 months from date of receipt.
Predicted Protein Size:	53.5 kDa
Gene Name:	peripherin
Database Link:	<a href="#">NP_006253</a> <a href="#">Entrez Gene 19132 Mouse</a> <a href="#">Entrez Gene 24688 Rat</a> <a href="#">Entrez Gene 5630 Human</a> <a href="#">P41219</a>
Background:	This gene encodes a cytoskeletal protein found in neurons of the peripheral nervous system. The encoded protein is a type III intermediate filament protein with homology to other cytoskeletal proteins such as desmin, and is a different protein that the peripherin found in photoreceptors. Mutations in this gene have been associated with susceptibility to amyotrophic lateral sclerosis. [provided by RefSeq, Jul 2008]

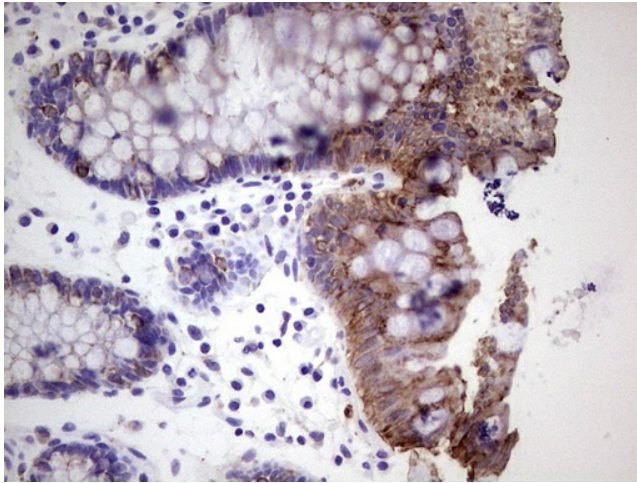


[View online »](#)

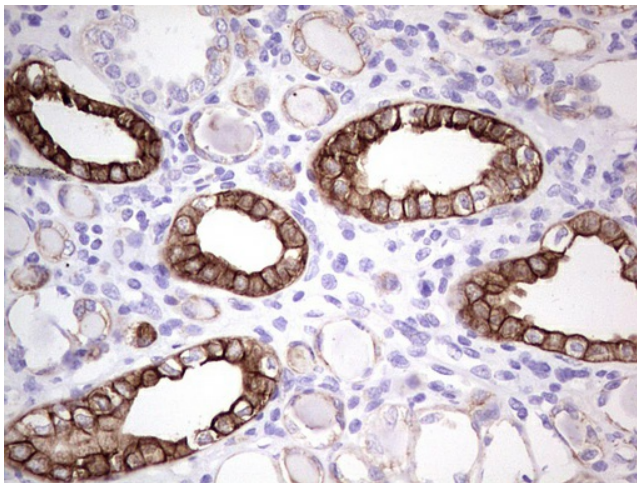
Synonyms: NEF4; PRPH1

Protein Pathways: Amyotrophic lateral sclerosis (ALS)

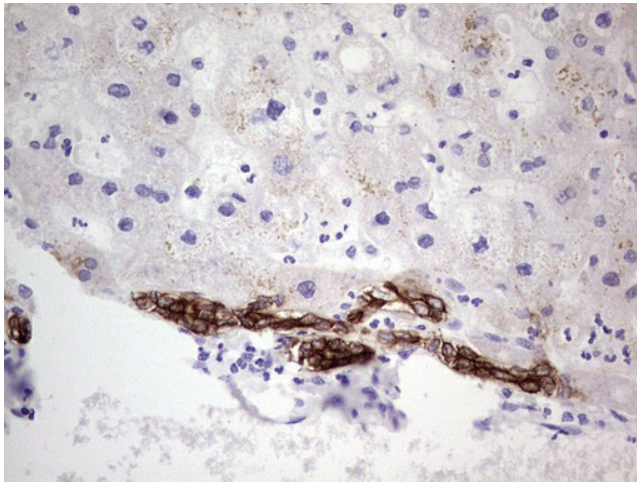
### Product images:



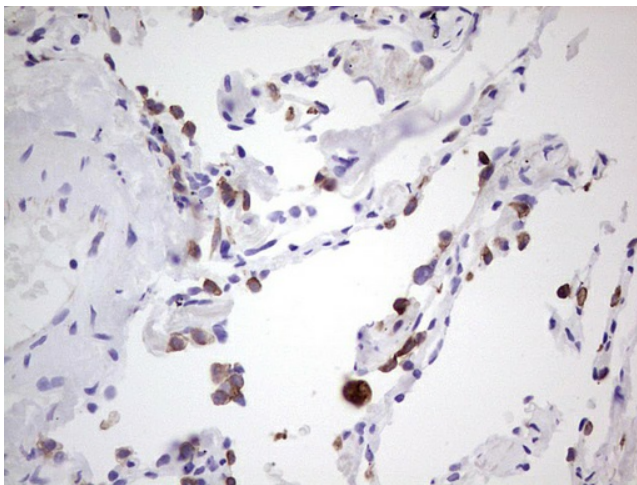
Immunohistochemical staining of paraffin-embedded Human colon tissue within the normal limits using anti-PRPH mouse monoclonal antibody. (Heat-induced epitope retrieval by 1mM EDTA in 10mM Tris, pH8.5, 120°C for 3min, [TA806181])



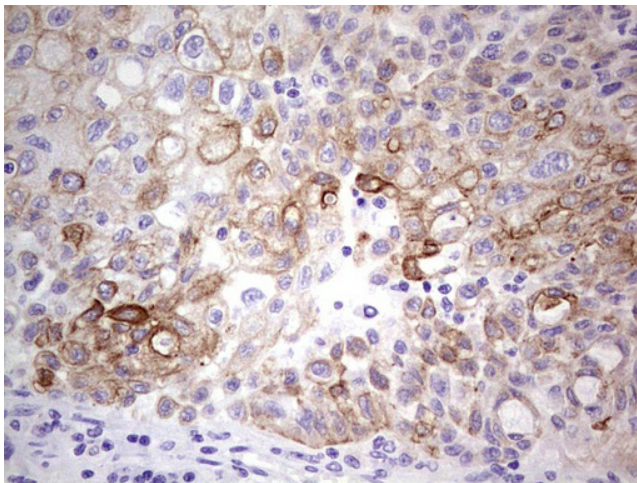
Immunohistochemical staining of paraffin-embedded Human Kidney tissue within the normal limits using anti-PRPH mouse monoclonal antibody. (Heat-induced epitope retrieval by 1mM EDTA in 10mM Tris, pH8.5, 120°C for 3min, [TA806181])



Immunohistochemical staining of paraffin-embedded Human liver tissue within the normal limits using anti-PRPH mouse monoclonal antibody. (Heat-induced epitope retrieval by 1mM EDTA in 10mM Tris, pH8.5, 120°C for 3min, [TA806181])

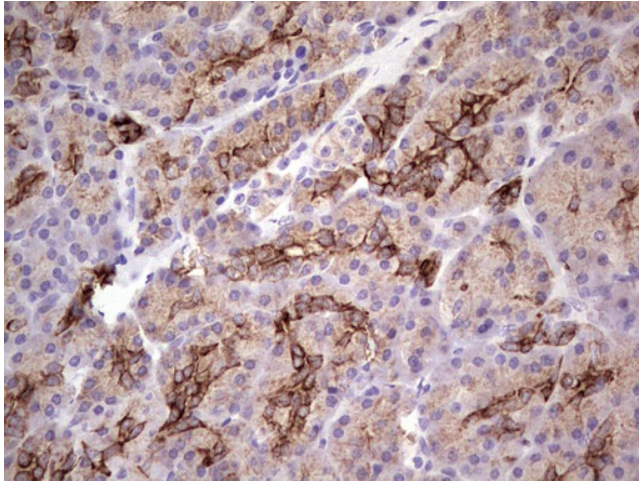


Immunohistochemical staining of paraffin-embedded Human lung tissue within the normal limits using anti-PRPH mouse monoclonal antibody. (Heat-induced epitope retrieval by 1mM EDTA in 10mM Tris, pH8.5, 120°C for 3min, [TA806181])

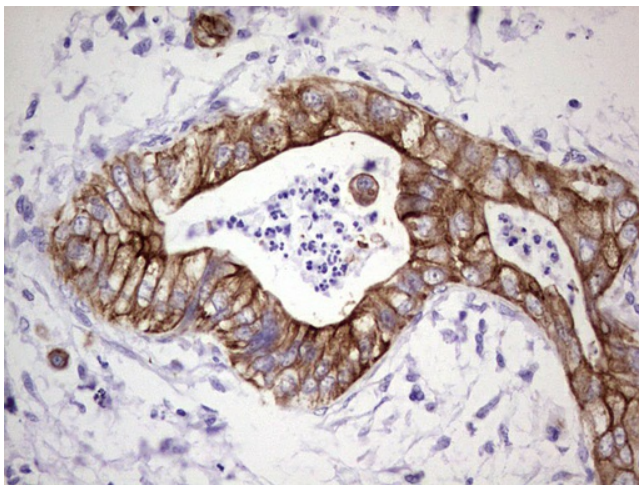


Immunohistochemical staining of paraffin-embedded Carcinoma of Human lung tissue using anti-PRPH mouse monoclonal antibody. (Heat-induced epitope retrieval by 1mM EDTA in 10mM Tris, pH8.5, 120°C for 3min, [TA806181])

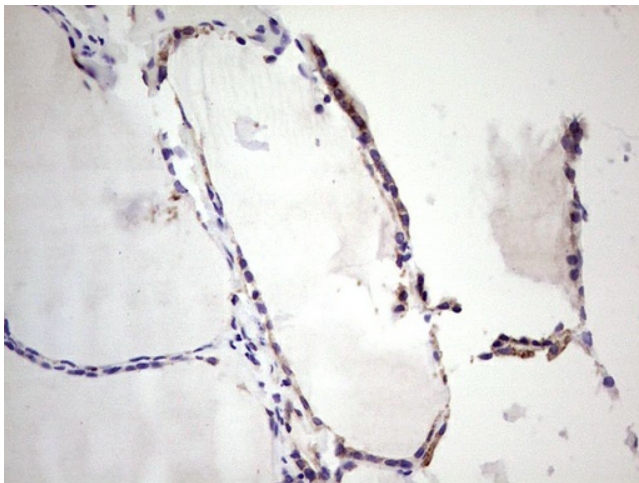




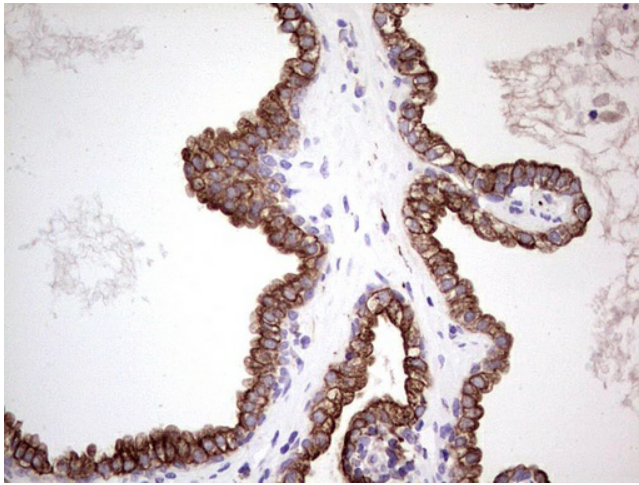
Immunohistochemical staining of paraffin-embedded Human pancreas tissue within the normal limits using anti-PRPH mouse monoclonal antibody. (Heat-induced epitope retrieval by 1mM EDTA in 10mM Tris, pH8.5, 120°C for 3min, [TA806181])



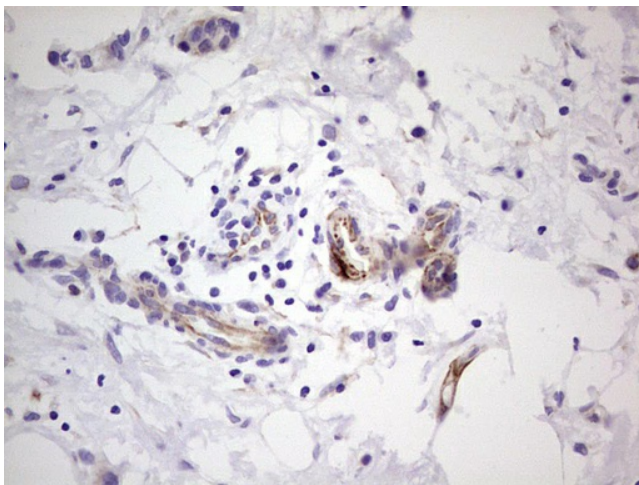
Immunohistochemical staining of paraffin-embedded Carcinoma of Human pancreas tissue using anti-PRPH mouse monoclonal antibody. (Heat-induced epitope retrieval by 1mM EDTA in 10mM Tris, pH8.5, 120°C for 3min, [TA806181])



Immunohistochemical staining of paraffin-embedded Human thyroid tissue within the normal limits using anti-PRPH mouse monoclonal antibody. (Heat-induced epitope retrieval by 1mM EDTA in 10mM Tris, pH8.5, 120°C for 3min, [TA806181])



Immunohistochemical staining of paraffin-embedded Human prostate tissue within the normal limits using anti-PRPH mouse monoclonal antibody. (Heat-induced epitope retrieval by 1mM EDTA in 10mM Tris, pH8.5, 120°C for 3min, [TA806181])



Immunohistochemical staining of paraffin-embedded Carcinoma of Human bladder tissue using anti-PRPH mouse monoclonal antibody. (Heat-induced epitope retrieval by 1mM EDTA in 10mM Tris, pH8.5, 120°C for 3min, [TA806181])