

Product datasheet for **TA806110S**

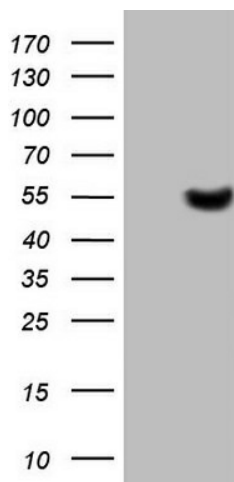
DNAAF11 Mouse Monoclonal Antibody [Clone ID: OTI1D4]

Product data:

Product Type:	Primary Antibodies
Clone Name:	OTI1D4
Applications:	WB
Recommended Dilution:	WB 1:2000
Reactivity:	Human
Host:	Mouse
Isotype:	IgG2b
Clonality:	Monoclonal
Immunogen:	Full length human recombinant protein of human LRRC6 (NP_036604) produced in HEK293T cell.
Formulation:	PBS (pH 7.3) containing 1% BSA, 50% glycerol and 0.02% sodium azide.
Concentration:	1 mg/ml
Purification:	Purified from mouse ascites fluids or tissue culture supernatant by affinity chromatography (protein A/G)
Conjugation:	Unconjugated
Storage:	Store at -20°C as received.
Stability:	Stable for 12 months from date of receipt.
Predicted Protein Size:	54.1 kDa
Gene Name:	leucine rich repeat containing 6
Database Link:	NP_036604 Entrez Gene 23639 Human Q86X45
Background:	The protein encoded by this gene contains several leucine-rich repeat domains and appears to be involved in the motility of cilia. Defects in this gene are a cause of primary ciliary dyskinesia-19 (CILD19). Two transcript variants, one protein-coding and the other not, have been found for this gene. [provided by RefSeq, Dec 2012]
Synonyms:	CILD19; LRTP; TSLRP



[View online »](#)

Product images:

HEK293T cells were transfected with the pCMV6-ENTRY control (Left lane) or pCMV6-ENTRY LRRC6 ([RC208256], Right lane) cDNA for 48 hrs and lysed. Equivalent amounts of cell lysates (5 ug per lane) were separated by SDS-PAGE and immunoblotted with anti-LRRC6. Positive lysates [LY415734] (100ug) and [LC415734] (20ug) can be purchased separately from OriGene.