

## Product datasheet for **TA806109**

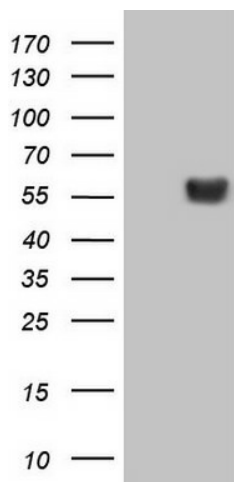
### **DNAAF11 Mouse Monoclonal Antibody [Clone ID: OTI7E9]**

#### **Product data:**

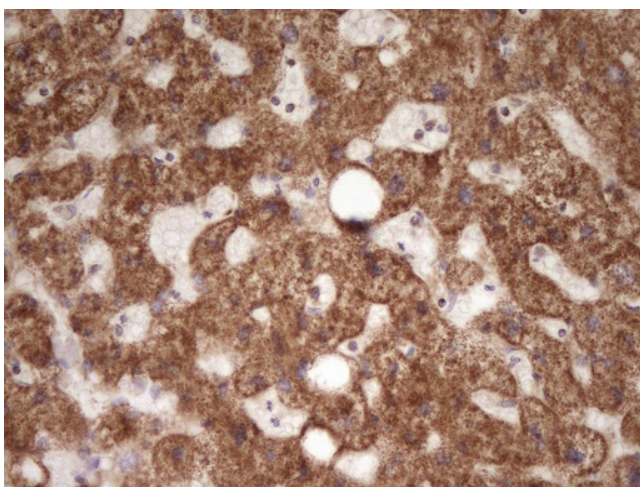
<b>Product Type:</b>	Primary Antibodies
<b>Clone Name:</b>	OTI7E9
<b>Applications:</b>	IHC, WB
<b>Recommended Dilution:</b>	IHC 1:150
<b>Reactivity:</b>	Human
<b>Host:</b>	Mouse
<b>Isotype:</b>	IgG1
<b>Clonality:</b>	Monoclonal
<b>Immunogen:</b>	Full length human recombinant protein of human LRRC6 (NP_036604) produced in HEK293T cell.
<b>Formulation:</b>	PBS (pH 7.3) containing 1% BSA, 50% glycerol and 0.02% sodium azide.
<b>Concentration:</b>	1 mg/ml
<b>Purification:</b>	Purified from mouse ascites fluids or tissue culture supernatant by affinity chromatography (protein A/G)
<b>Conjugation:</b>	Unconjugated
<b>Storage:</b>	Store at -20°C as received.
<b>Stability:</b>	Stable for 12 months from date of receipt.
<b>Predicted Protein Size:</b>	54.1 kDa
<b>Gene Name:</b>	leucine rich repeat containing 6
<b>Database Link:</b>	<a href="#">NP_036604</a> <a href="#">Entrez Gene 23639 Human</a> <a href="#">Q86X45</a>
<b>Background:</b>	The protein encoded by this gene contains several leucine-rich repeat domains and appears to be involved in the motility of cilia. Defects in this gene are a cause of primary ciliary dyskinesia-19 (CILD19). Two transcript variants, one protein-coding and the other not, have been found for this gene. [provided by RefSeq, Dec 2012]
<b>Synonyms:</b>	CILD19; LRTP; TSLRP



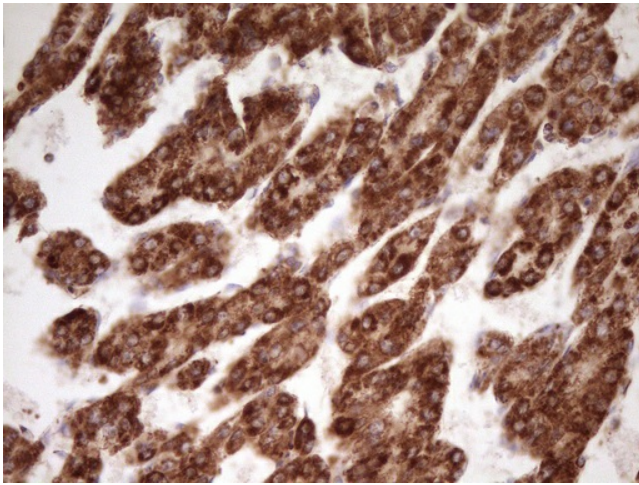
[View online »](#)

**Product images:**

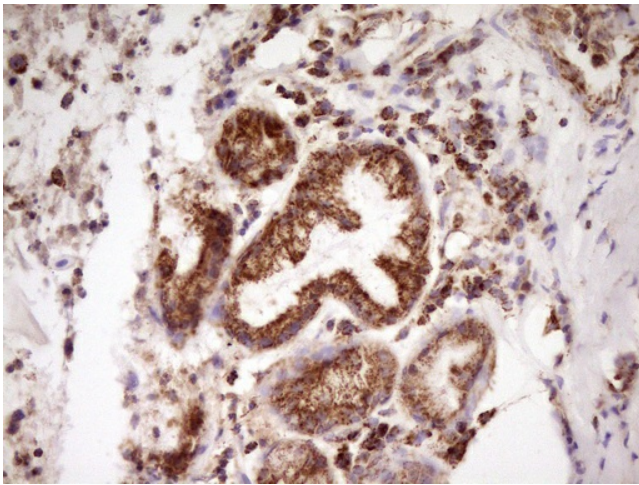
HEK293T cells were transfected with the pCMV6-ENTRY control (Cat# [PS100001], Left lane) or pCMV6-ENTRY LRRC6 (Cat# [RC208256], Right lane) cDNA for 48 hrs and lysed. Equivalent amounts of cell lysates (5 ug per lane) were separated by SDS-PAGE and immunoblotted with anti-LRRC6 (Cat# TA806109). Positive lysates [LY415734] (100ug) and [LC415734] (20ug) can be purchased separately from OriGene.



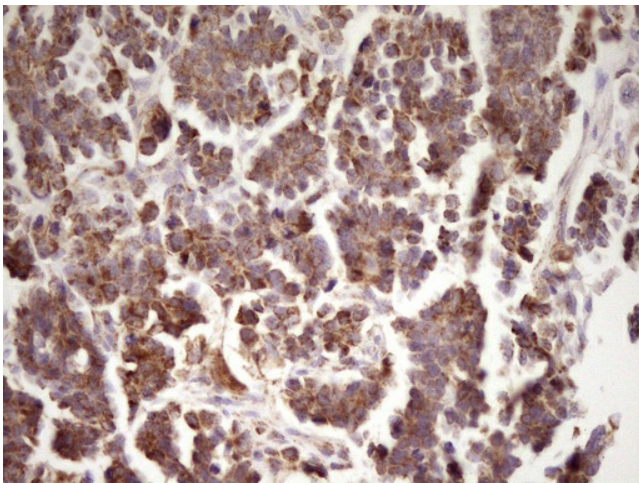
Immunohistochemical staining of paraffin-embedded Human liver tissue within the normal limits using anti-LRRC6 mouse monoclonal antibody. (Heat-induced epitope retrieval by 1mM EDTA in 10mM Tris, pH8.5, 120°C for 3min, TA806109)



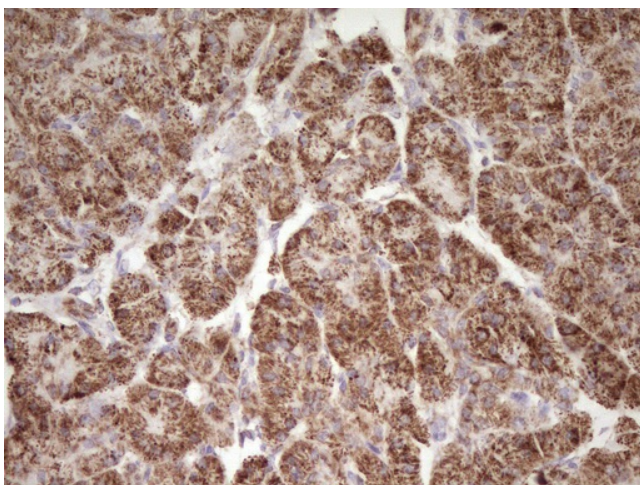
Immunohistochemical staining of paraffin-embedded Carcinoma of Human liver tissue using anti-LRRC6 mouse monoclonal antibody. (Heat-induced epitope retrieval by 1mM EDTA in 10mM Tris, pH8.5, 120°C for 3min, TA806109)



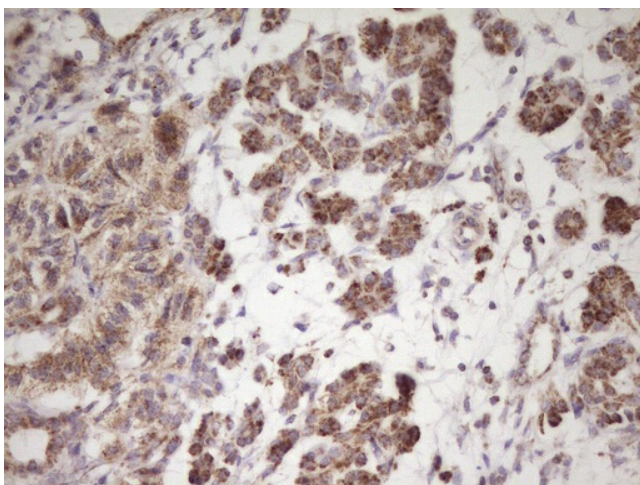
Immunohistochemical staining of paraffin-embedded Carcinoma of Human lung tissue using anti-LRRC6 mouse monoclonal antibody. (Heat-induced epitope retrieval by 1mM EDTA in 10mM Tris, pH8.5, 120°C for 3min, TA806109)



Immunohistochemical staining of paraffin-embedded Adenocarcinoma of Human ovary tissue using anti-LRRC6 mouse monoclonal antibody. (Heat-induced epitope retrieval by 1mM EDTA in 10mM Tris, pH8.5, 120°C for 3min, TA806109)



Immunohistochemical staining of paraffin-embedded Human pancreas tissue within the normal limits using anti-LRRC6 mouse monoclonal antibody. (Heat-induced epitope retrieval by 1mM EDTA in 10mM Tris, pH8.5, 120°C for 3min, TA806109)



Immunohistochemical staining of paraffin-embedded Carcinoma of Human pancreas tissue using anti-LRRC6 mouse monoclonal antibody. (Heat-induced epitope retrieval by 1mM EDTA in 10mM Tris, pH8.5, 120°C for 3min, TA806109)