

## Product datasheet for **TA806097M**

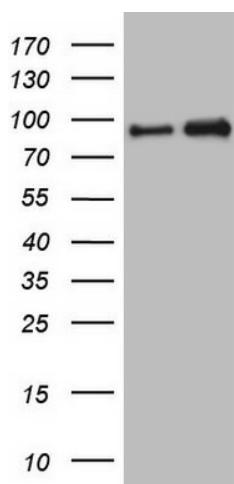
### NKRF Mouse Monoclonal Antibody [Clone ID: OTI4C2]

#### Product data:

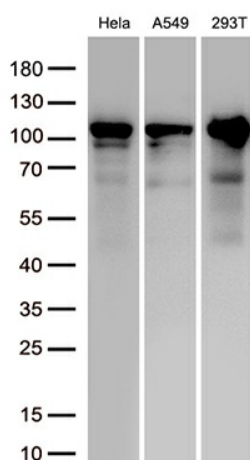
Product Type:	Primary Antibodies
Clone Name:	OTI4C2
Applications:	WB
Recommended Dilution:	WB 1:2000
Reactivity:	Human, Mouse
Host:	Mouse
Isotype:	IgG2a
Clonality:	Monoclonal
Immunogen:	Human recombinant protein fragment corresponding to amino acids 1-296 of human NKRF(NP_060014) produced in E.coli.
Formulation:	PBS (pH 7.3) containing 1% BSA, 50% glycerol and 0.02% sodium azide.
Concentration:	1 mg/ml
Purification:	Purified from mouse ascites fluids or tissue culture supernatant by affinity chromatography (protein A/G)
Conjugation:	Unconjugated
Storage:	Store at -20°C as received.
Stability:	Stable for 12 months from date of receipt.
Gene Name:	NFKB repressing factor
Database Link:	<a href="#">NP_060014</a> <a href="#">Entrez Gene 77286 Mouse</a> <a href="#">Entrez Gene 55922 Human</a> <a href="#">O15226</a>
Synonyms:	ITBA4; NRF
Protein Families:	Transcription Factors

[View online »](#)

## Product images:



HEK293T cells were transfected with the pCMV6-ENTRY control (Cat# [PS100001], Left lane) or pCMV6-ENTRY NKRF (Cat# [RC208507], Right lane) cDNA for 48 hrs and lysed. Equivalent amounts of cell lysates (5 ug per lane) were separated by SDS-PAGE and immunoblotted with anti-NKRF (Cat# [TA806097]). Positive lysates [LY402598] (100ug) and [LC402598] (20ug) can be purchased separately from OriGene.



Western blot analysis of extracts (30ug per lane) from 3 cell lines lysates by using anti-NKRF monoclonal antibody ([TA806097], 1:500).