

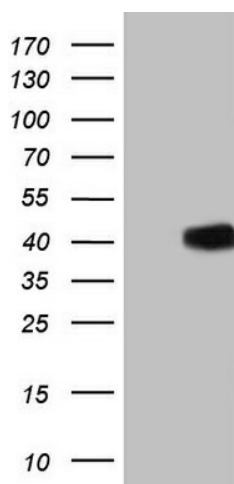
Product datasheet for **TA806083M**

GLI4 Mouse Monoclonal Antibody [Clone ID: OTI3D5]

Product data:

Product Type:	Primary Antibodies
Clone Name:	OTI3D5
Applications:	WB
Recommended Dilution:	WB 1:2000
Reactivity:	Human
Host:	Mouse
Isotype:	IgG2b
Clonality:	Monoclonal
Immunogen:	Full length human recombinant protein of human GLI4 (NP_612474) produced in E.coli.
Formulation:	PBS (pH 7.3) containing 1% BSA, 50% glycerol and 0.02% sodium azide.
Concentration:	1 mg/ml
Purification:	Purified from mouse ascites fluids or tissue culture supernatant by affinity chromatography (protein A/G)
Conjugation:	Unconjugated
Storage:	Store at -20°C as received.
Stability:	Stable for 12 months from date of receipt.
Predicted Protein Size:	41 kDa
Gene Name:	GLI family zinc finger 4
Database Link:	NP_612474 Entrez Gene 2738 Human P10075
Synonyms:	HKR4; ZNF928

[View online »](#)

Product images:


HEK293T cells were transfected with the pCMV6-ENTRY control (Left lane) or pCMV6-ENTRY GLI4 ([RC204366], Right lane) cDNA for 48 hrs and lysed. Equivalent amounts of cell lysates (5 ug per lane) were separated by SDS-PAGE and immunoblotted with anti-GLI4. Positive lysates [LY408592] (100ug) and [LC408592] (20ug) can be purchased separately from OriGene.