

Product datasheet for **TA806081**

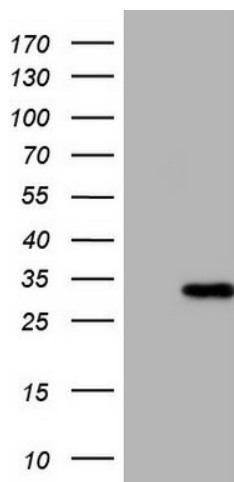
MRRF Mouse Monoclonal Antibody [Clone ID: OTI7F1]

Product data:

Product Type:	Primary Antibodies
Clone Name:	OTI7F1
Applications:	WB
Recommended Dilution:	WB 1:2000
Reactivity:	Human, Mouse, Rat
Host:	Mouse
Isotype:	IgG1
Clonality:	Monoclonal
Immunogen:	Human recombinant protein fragment corresponding to amino acids 56-262 of human MRRF(NP_620132) produced in E.coli.
Formulation:	PBS (pH 7.3) containing 1% BSA, 50% glycerol and 0.02% sodium azide.
Concentration:	1 mg/ml
Purification:	Purified from mouse ascites fluids or tissue culture supernatant by affinity chromatography (protein A/G)
Conjugation:	Unconjugated
Storage:	Store at -20°C as received.
Stability:	Stable for 12 months from date of receipt.
Predicted Protein Size:	29.1 kDa
Gene Name:	mitochondrial ribosome recycling factor
Database Link:	NP_620132 Entrez Gene 67871 Mouse Entrez Gene 311903 Rat Entrez Gene 92399 Human Q96E11
Synonyms:	MRFF; MTRRF; RRF
Protein Families:	Transmembrane



[View online »](#)

Product images:

HEK293T cells were transfected with the pCMV6-ENTRY control (Left lane) or pCMV6-ENTRY MRRF ([RC203909], Right lane) cDNA for 48 hrs and lysed. Equivalent amounts of cell lysates (5 ug per lane) were separated by SDS-PAGE and immunoblotted with anti-MRRF. Positive lysates [LY408516] (100ug) and [LC408516] (20ug) can be purchased separately from OriGene.