

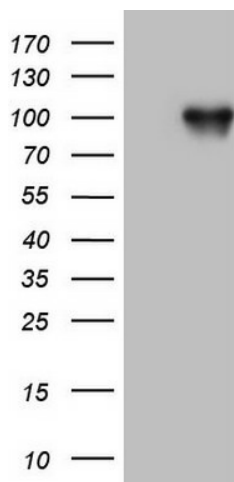
## Product datasheet for **TA806080AM**

### **FSIP1 Mouse Monoclonal Antibody (Biotin conjugated) [Clone ID: OTI2F6]**

#### **Product data:**

Product Type:	Primary Antibodies
Clone Name:	OTI2F6
Applications:	WB
Recommended Dilution:	WB 1:2000
Reactivity:	Human
Host:	Mouse
Isotype:	IgG1
Clonality:	Monoclonal
Immunogen:	Full length human recombinant protein of human FSIP1 (NP_689810) produced in HEK293T cell.
Formulation:	PBS (pH 7.3) containing 1% BSA, 50% glycerol and 0.02% sodium azide.
Concentration:	0.5 mg/ml
Purification:	Purified from mouse ascites fluids or tissue culture supernatant by affinity chromatography (protein A/G)
Conjugation:	Biotin
Storage:	Store at -20°C as received.
Stability:	Stable for 12 months from date of receipt.
Predicted Protein Size:	65.9 kDa
Gene Name:	fibrous sheath interacting protein 1
Database Link:	<a href="#">NP_689810</a> <a href="#">Entrez Gene 161835 Human</a> <a href="#">Q8NA03</a>
Synonyms:	HSD10

[View online »](#)

**Product images:**


HEK293T cells were transfected with the pCMV6-ENTRY control (Left lane) or pCMV6-ENTRY FSIP1 ([RC207399], Right lane) cDNA for 48 hrs and lysed. Equivalent amounts of cell lysates (5 ug per lane) were separated by SDS-PAGE and immunoblotted with anti-FSIP1 (1:2000). Positive lysates [LY407403] (100ug) and [LC407403] (20ug) can be purchased separately from OriGene.