

## Product datasheet for **TA806063AM**

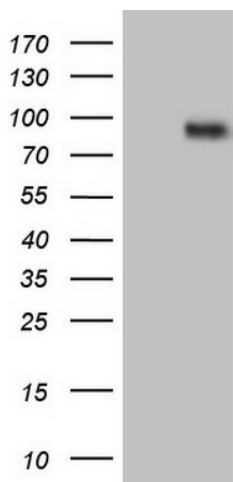
### Factor I (CFI) Mouse Monoclonal Antibody (Biotin conjugated) [Clone ID: OTI11G3]

#### Product data:

|                         |   |
|-------------------------|---|
| Product Type:           | Primary Antibodies  |
| Clone Name:             | OTI11G3   |
| Applications:           | WB  |
| Recommended Dilution:   | WB 1:500  |
| Reactivity:             | Human   |
| Host:                   | Mouse   |
| Isotype:                | IgG2a   |
| Clonality:              | Monoclonal  |
| Immunogen:              | Human recombinant protein fragment corresponding to amino acids 340-583 of human CFI(NP_000195) produced in E.coli. |
| Formulation:            | PBS (pH 7.3) containing 1% BSA, 50% glycerol and 0.02% sodium azide.  |
| Concentration:          | 0.5 mg/ml   |
| Purification:           | Purified from mouse ascites fluids or tissue culture supernatant by affinity chromatography (protein A/G)           |
| Conjugation:            | Biotin  |
| Storage:                | Store at -20°C as received.   |
| Stability:              | Stable for 12 months from date of receipt.  |
| Predicted Protein Size: | 63.4 kDa  |
| Gene Name:              | complement factor I   |
| Database Link:          | <a href="#">NP_000195</a><br><a href="#">Entrez Gene 3426 Human</a><br><a href="#">P05156</a>                       |
| Synonyms:               | AHUS3; ARMD13; C3b-INA; C3BINA; FI; IF; KAF   |
| Protein Families:       | Druggable Genome, Protease, Secreted Protein  |
| Protein Pathways:       | Complement and coagulation cascades   |



[View online »](#)

**Product images:**

HEK293T cells were transfected with the pCMV6-ENTRY control (Left lane) or pCMV6-ENTRY CFI ([RC216645], Right lane) cDNA for 48 hrs and lysed. Equivalent amounts of cell lysates (5 ug per lane) were separated by SDS-PAGE and immunoblotted with anti-CFI. Positive lysates [LY424865] (100ug) and [LC424865] (20ug) can be purchased separately from OriGene.